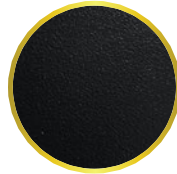




Vertical Cable with Victorian Top Rail in White

## COLORS AND TOP RAILS



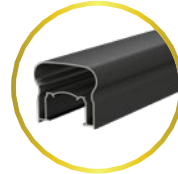
BLACK



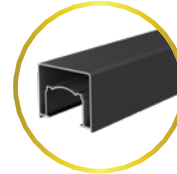
WHITE



BRONZE



VICTORIAN



ALTA



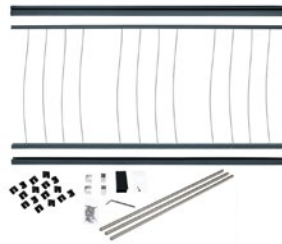
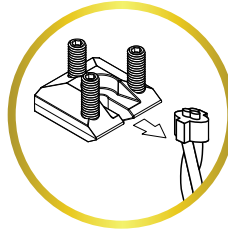
DRINK RAIL

Colors vary by monitors and printing process. See actual samples for accurate color.

For the Drink Rail, the Bottom Rail Snap is used as the Top Rail Snap which supports the bracket and the Drink Rail. Drink Rail is used for deck panel only.

## VERTICAL CABLE SYSTEMS

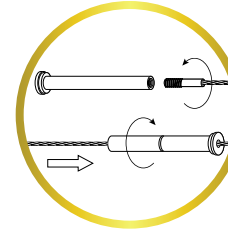
Harmony Vertical Cable Railing is a revolutionary system with **pre-installed cables** and easy to adjust **Deck & Stair Tensioning Blocks** with set screws.



Convenient Kits for Easy Planning and Ordering

## HORIZONTAL CABLE SYSTEMS

Harmony Horizontal Cable Railing is an easy to install system with **Fast Fitting Hardware** for simple tensioning and **pre-drilled posts** for smooth cable threading.



All Necessary Cable Tools are Available  
Cable Gripper Tool, Horizontal Cable Tool Kit, and more.

Note: Horizontal Full Frame / Horizontal Top Rail Kits do not include cable. Cable kits are purchased separately.



Vertical Cable with Victorian Top Rail in Black



Visit [HarmonyRailing.com](https://www.harmonyrailing.com) for image galleries, technical data and resources.

  
HARMONY  
RAILING®



©2024 Harmony Railing. All Rights Reserved. Version 1.1 Part #MH68600



Horizontal Cable with Continuous Victorian Top Rail and 2in Posts in Black



  
HARMONY  
RAILING®

CABLE  
RAILING SYSTEMS

# STRONG AND BEAUTIFUL POWDER COATED ALUMINUM RAILING



**FULL PRODUCT LINE**  
Gate kits, lights, ADA handrails and parts



**PREMIUM DESIGN**  
Hidden fasteners, no welds or rivets, top rail options



**VERSATILITY**  
36in and 42in heights and 6ft and 8ft lengths for both level and stair applications.

## THREE EASY STEPS

-  **PLAN YOUR PROJECT**
-  **SELECT YOUR KITS**
-  **INSTALL YOUR RAILING**

Find your railing style and color, then choose from 6ft or 8ft sections for your specific layout. Add gates, lighting and ADA handrails to finish your outdoor living space.



### STRENGTH AND DURABILITY

Textured Powder-Coated Aluminum. Engineered, tested and approved as per ICC-ES AC273 and is IBC/IRC code compliant. 1/8" Stainless Steel Cables.



### PREASSEMBLED PANELS\*

Fast and easy installation  
\*Vertical Cable



### CONVENIENT KITS

Simple planning and ordering

Horizontal Cable with Victorian Top Rail in Bronze

**IMPORTANT NOTES:**

- Actual picket panel sizes: 6' Panels = 69.43in; 8ft Panels = 91.31in.
- 3in posts are required to reach 6ft & 8ft lengths.
- Stair railing panels are adjustable and will accommodate 30-40° stair angles.
- **42in post kits are required for middle and bottom stair posts with a 36in railing system. 48in post kits are required for middle and bottom stair posts with a 42in railing system.**
- 45° deck angles require 22.5° clips applied to each side of the post. The 22.5° clip kit is sold **SEPARATELY**.
- Two 3in posts are recommended on top of deck surface if stair riser is not at a 90° angle from deck frame.
- The Horizontal Cable Systems require pre-drilled Harmony Cable Posts. The Vertical Cable Systems use standard posts.
- 2" Cable and Standard Posts may be used for continuous (over-the-post) applications.

## HARMONY RAILING® SYSTEMS



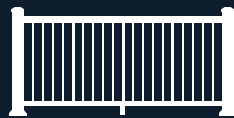
### BALUSTER RAILING

The Aluminum Baluster railing system is a traditional accent for any home.



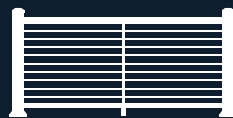
### GLASS RAILING

Harmony Glass railings offer a clear solution to a great view.



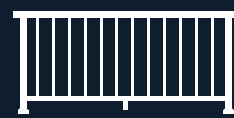
### VERTICAL CABLE

Easy installation with preassembled Vertical Cable Panels.



### HORIZONTAL CABLE

Maximize the view with Stainless Steel Horizontal Cables. Offered in two styles: Full Frame and Top Rail.



### CONTINUOUS BALUSTER

Use 2in posts, baluster railings and Continuous Top Rails for a seamless look.



### DRINK RAIL

The Drink Rail system beautifully matches the deck surface to the top rail.



### BALUSTER OPEN MID-RAIL

Use 36in baluster panels with separate Top Rails for an enhanced 42in system. Only offered in 42" Height. Custom ordered product. Not available in all areas.



### ADA HANDRAIL

Add safety to stairs, ramps and horizontal installations. Fully compliant and current with federal ADA standards.