



HARMONY
RAILING™



PREMIUM ALUMINUM
RAILING, FENCING AND
DECKING SYSTEMS

2023
PRODUCT
CATALOG

ABOUT US

Harmony Railing™ products offers a variety of luxury outdoor living products that beautifully complete any outdoor oasis. Our systems are safe, low maintenance and elevate the look of decks, patios, and pool areas across the country.

STRONG AND SAFE

Our dedication to research and development ensures a safe, uniquely engineered railing system that meets commercial and residential codes throughout the country.

LOW MAINTENANCE

Harmony's high-performance products are made of durable aluminum and coated with an AkzoNobel custom-blended Interpon D Series AAMA 2604 textured powder coating.

Harmony Railing™ products are backed by a 20-year limited warranty against manufacturing defects, cracking, chipping, blistering or peeling under normal use and weather conditions.

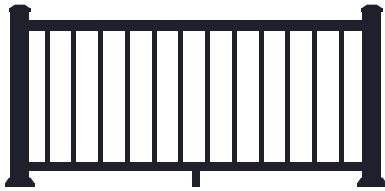
BEAUTY AND STYLE

We offer a variety of classic and modern railing styles. Our railing is manufactured with premium powder-coated aluminum that creates a beautiful look and is soft to touch. All systems are available in multiple colors.

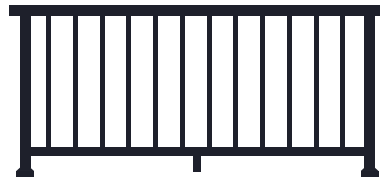


Baluster Panel System in Black

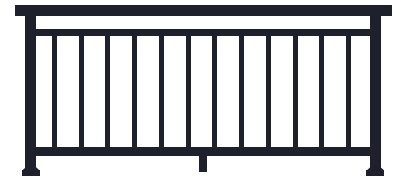
HARMONY RAILING, FENCING AND DECKING SYSTEMS



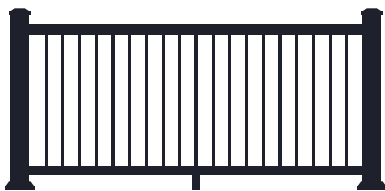
Standard Baluster



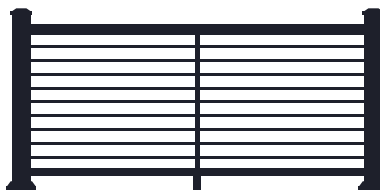
Continuous Baluster



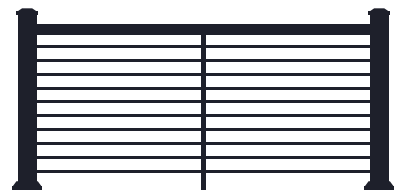
42" Open Mid-Rail Baluster
Special Order Only. Not available in all areas.



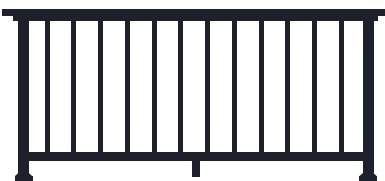
Vertical Cable



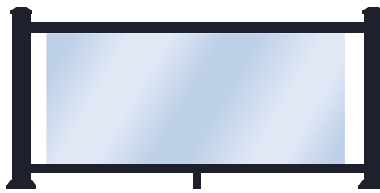
Horizontal Cable - Full Frame



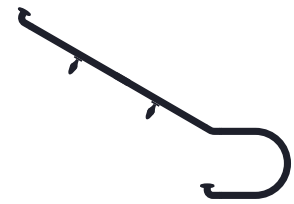
Horizontal Cable - Top Rail Only



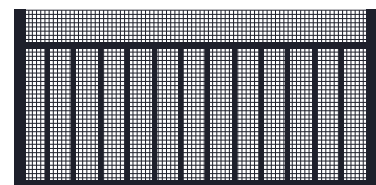
Drink Rail



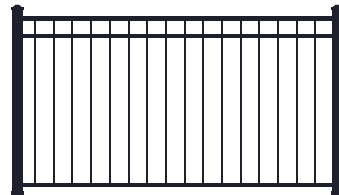
Glass



ADA Handrail



Screen Rail



Fence



Aluminum Framing



PREMIUM DESIGN
Hidden fasteners, no welds or rivets, elegant top rails



FULL PRODUCT LINE
Gate kits, lights, ADA handrails and parts



STRENGTH AND DURABILITY
Textured Powder-Coated Aluminum. Engineered, tested and approved as per ICC-ES AC273 and is IBC/IRC code compliant.



PREASSEMBLED PANELS
Fast and easy installation



CONVENIENT KITS
Simple planning and ordering

COLORS AND STYLES

TEXTURED COLOR OPTIONS



BLACK



WHITE



BRONZE

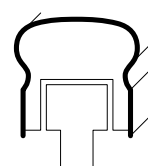


PIANO RAIL[®]
Special Order Only

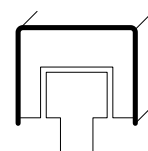


TUXEDO RAIL[®]
Special Order Only

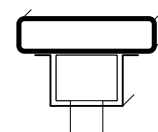
TOP RAIL PROFILES



VICTORIAN



ALTA



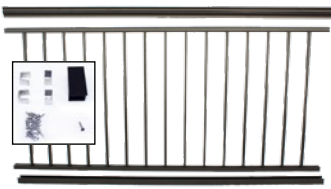
DRINK RAIL
Drink Rail Attachment Kit Required

Colors vary by monitors and printing process. See actual samples for accurate color.

ALUMINUM RAILING SPECIFICATIONS

- 6ft Panels – Actual Sizes: 33.5in H x 69.43in W or 39in H x 69.43in W
- 8ft Panels – Actual Sizes: 33.5in H x 91.31in W or 39in H x 91.31in W
- Baluster Dimensions: 0.5in x 0.75in (.050in wall)
- Baluster Spacing: 3.875in
- Victorian Top Rail: 2.25in H x 2.25in W (.055in wall)
- Alta Top Rail: 1.833in H x 2.25in W (.055in wall)
- Bottom Rail: 1.5in x 1.5in (.055in wall)
- 3in x 3in Posts – Actual Lengths: 38.25in, 43.5in and 48in (.065in wall)
- 2in x 2in Posts – Actual Lengths: 34.06in, 39.625in and 48in (.09in wall)
- Gate Kits – Actual Sizes: 33.9in H x 48in W or 39.5in H x 48in W

BALUSTER PANEL SYSTEM



PREASSEMBLED ALUMINUM PANELS

RAILING PANELS

Victorian

36in H x 6ft W P/N HR362306
 42in H x 6ft W P/N HR362406
 36in H x 8ft W P/N HR362308
 42in H x 8ft W P/N HR362408

Alta

36in H x 6ft W P/N HR862306
 42in H x 6ft W P/N HR862406
 36in H x 8ft W P/N HR862308
 42in H x 8ft W P/N HR862408

B=Black, W=White, Z=Bronze.
 Piano and Tuxedo available special order only.



B=Black, W=White, Z=Bronze.
 Piano and Tuxedo available special order only.

STAIR RAILING PANELS

Victorian

36in H x 6ft W P/N HS352306
 42in H x 6ft W P/N HS352406
 36in H x 8ft W P/N HS352308
 42in H x 8ft W P/N HS352408

Alta

36in H x 6ft W P/N HS852306
 42in H x 6ft W P/N HS852406
 36in H x 8ft W P/N HS852308
 42in H x 8ft W P/N HS852408

CONTINUOUS RAILING SYSTEM



RAILING PANELS

36in H x 6ft W P/N HR062306
 42in H x 6ft W P/N HR062406
 36in H x 8ft W P/N HR062308
 42in H x 8ft W P/N HR062408

B=Black, W=White, Z=Bronze

NOTE: Top rails sold separately with continuous railing system

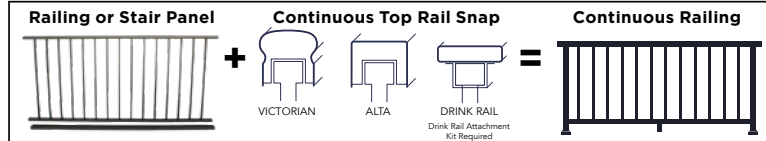


STAIR RAILING PANELS

36in H x 6ft W P/N HS052306
 42in H x 6ft W P/N HS052406
 36in H x 8ft W P/N HS052308
 42in H x 8ft W P/N HS052408

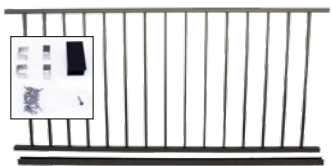
B=Black, W=White, Z=Bronze

NOTE: Top rails sold separately with continuous railing system



Note: 2in Posts are used with the Continuous Railing System.

DRINK RAIL SYSTEM



RAILING PANELS

(SAME AS CONTINUOUS RAIL SYSTEM)

36in H x 6ft W P/N HR062306
 42in H x 6ft W P/N HR062406
 36in H x 8ft W P/N HR062308
 42in H x 8ft W P/N HR062408

B=Black, W=White, Z=Bronze

NOTE: The Drink Rail System is not offered for stair panels.



DRINK RAIL KITS

Includes 4 color matched clips, 8 #8 3/4in Self-tapping SS screws, 16 #8 3/4in type 17 phillips stainless steel mod truss K-Lath screws.

Black = P/N BR094203BK
 White = P/N BR094203WK
 Bronze = P/N BR094203ZK

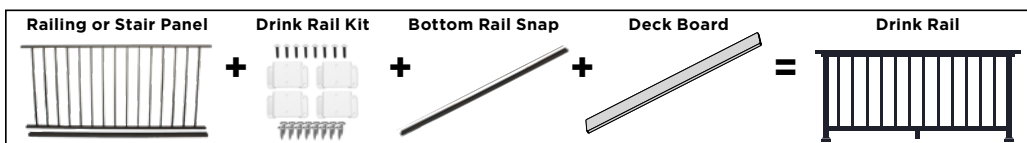
Bottom Rail Snaps

6ft Snap P/N SH093106
 8ft Snap P/N SH093108

B=Black, W=White, Z=Bronze

Choose your own top rail - typically a deck board to match the deck surface.

Each 8ft Section Requires: one Railing Panel, four Drink Rail Clips (1/3 of a kit) and one Bottom Rail Snap. For 6ft sections, only three Drink Rail Clips are required.



NOTE: For the Drink Rail System, the Bottom Rail Snap (SH093106 or SH093108) is used as the Top Rail Snap which supports the bracket and the Drink Rail. The panels to order are the continuous top rail panels (they do not include a top rail snap).

VERTICAL CABLE RAILING SYSTEM



36IN VERTICAL CABLE PANELS

36in H x 6ft W Victorian Deck	P/N VC662306
36in H x 8ft W Victorian Deck	P/N VC662308
36in H x 6ft W Alta Deck	P/N VC162306
36in H x 8ft W Alta Deck	P/N VC162308
36in H x 6ft W Victorian Stair	P/N VC652306
36in H x 6ft W Alta Stair	P/N VC152306

42IN VERTICAL CABLE PANELS

42in H x 6ft W Victorian Deck	P/N VC662406
42in H x 8ft W Victorian Deck	P/N VC662408
42in H x 6ft W Alta Deck	P/N VC162406
42in H x 8ft W Alta Deck	P/N VC162408
42in H x 6ft W Victorian Stair	P/N VC652406
42in H x 6ft W Alta Stair	P/N VC152406



36IN CONTINUOUS VERTICAL CABLE PANELS*

36in H x 6ft W Continuous Deck	P/N VC088306
36in H x 8ft W Continuous Deck	P/N VC088308
36in H x 6ft W Continuous Stair	P/N VC058306

42IN CONTINUOUS VERTICAL CABLE PANELS*

42in H x 6ft W Continuous Deck	P/N VC088406
42in H x 8ft W Continuous Deck	P/N VC088408
42in H x 6ft W Continuous Stair	P/N VC058406

B=Black, W=White, Z=Bronze

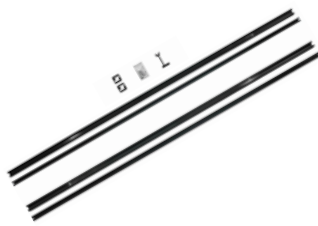


Actual panel heights: 33.5in and 39in. Actual panel lengths: 69.43in and 91.31in. 3in posts are required to reach 6ft and 8ft lengths on center. System uses standard 3in aluminum posts. Top Rail Snaps are included.

Continuous Top Rail Systems are used with 2in posts and do not include top rail snaps. Top rail snaps are sold separately in 18ft lengths.

*These kits can also be used as Sub-Assembly Replacement Kits.

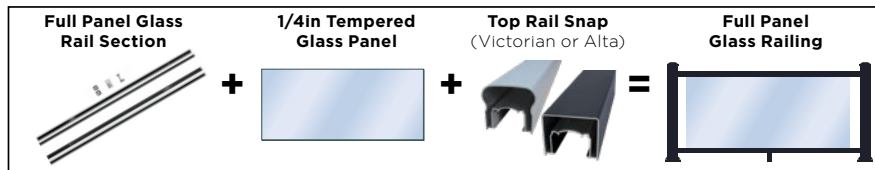
1/4IN TEMPERED GLASS RAILING SYSTEM



6FT FULL PANEL GLASS RAIL SECTION

Actual panel length = 69.43in. Glass and Top Rails are not included and must be purchased separately. P/N HGO31206

B=Black, W=White, Z=Bronze



1/4in Tempered Glass Panels not included.

HORIZONTAL CABLE RAILING SYSTEMS



Full Frame Kits (with bottom rail)



Top Rail Only Kits (without bottom rail)



36IN / 42IN FULL FRAME KITS

36/42in H x 6ft W Victorian Deck P/N TF661306
 36/42in H x 8ft W Victorian Deck P/N TF661308
 36/42in H x 6ft W Alta Deck P/N TF161306
 36/42in H x 8ft W Alta Deck P/N TF161308

36/42in H x 6ft W Victorian Stair P/N TF651306
 36/42in H x 8ft W Victorian Stair P/N TF651308
 36/42in H x 6ft W Alta Stair P/N TF151306
 36/42in H x 8ft W Alta Stair P/N TF151308

B=Black, W=White, Z=Bronze



36IN / 42IN CONTINUOUS FULL FRAME KITS*

36/42in H x 6ft W Continuous Deck P/N TF068306
 36/42in H x 8ft W Continuous Deck P/N TF068308
 36/42in H x 6ft W Continuous Stair P/N TF058306
 36/42in H x 8ft W Continuous Stair P/N TF058308

B=Black, W=White, Z=Bronze



36IN / 42IN TOP RAIL KITS

36/42in H x 6ft W Victorian Deck P/N TR661306
 36/42in H x 8ft W Victorian Deck P/N TR661308
 36/42in H x 6ft W Alta Deck P/N TR161306
 36/42in H x 8ft W Alta Deck P/N TR161308

36/42in H x 6ft W Victorian Stair P/N TR651306
 36/42in H x 8ft W Victorian Stair P/N TR651308
 36/42in H x 6ft W Alta Stair P/N TR151306
 36/42in H x 8ft W Alta Stair P/N TR151308

B=Black, W=White, Z=Bronze



36IN / 42IN CONTINUOUS TOP RAIL KITS*

36/42in H x 6ft W Continuous Deck P/N TR068306
 36/42in H x 8ft W Continuous Deck P/N TR068308
 36/42in H x 6ft W Continuous Stair P/N TR058306
 36/42in H x 8ft W Continuous Stair P/N TR058308

B=Black, W=White, Z=Bronze

SPECIFICATIONS:

- Actual panel heights: 33.5in H and 39in H. Actual Panel Lengths: 69.43in W and 91.31in W.
- 3in posts are required to reach 6ft and 8ft lengths on center.
- System requires Horizontal Cable Aluminum Posts.
- Full Frame Kits include a bottom rail; Top Rail Kits do not.
- The horizontal cable kits are used for both 36in and 42in systems.
- 36in Full Frame Systems require 9 horizontal cables; Top Rail Systems require 10 horizontal cables.
- 42in Full Frame Systems require 11 horizontal cables; Top Rail Systems require 12 horizontal cables.
- 36in and 42in Continuous Top Rail Systems are used with 2in posts and do not include top rail snaps. Top rail snaps are sold separately in 18ft lengths.
- Cable kits are designed for level or stair surfaces.

*These kits can also be used as Sub-Assembly Replacement Kits.

HORIZONTAL CABLE RAILING SYSTEMS



HORIZONTAL CABLE 3IN ALUMINUM POST KITS

These pre-drilled posts are required for the horizontal cable systems. Kits include: assembled post and base plate, post cap and post base plate vinyl skirt. Stair end posts include beveled washers. All posts below are for 36in and 42in horizontal cable systems. 42in posts are used for 42in systems, and are used for the bottom stair post on a 36in system.



36IN SYSTEMS

- 36in H x 3in W End Deck Post P/N PC6E1336
- 36in H x 3in W Inline Deck Post P/N PC6I1336
- 36in H x 3in W Corner Deck Post P/N PC6C1336
- 42in H x 3in W Inline Stair Post P/N PC6S1342
- 42in H x 3in W Stair Bottom Post P/N PC6B1342

36IN CONTINUOUS SYSTEMS

- 36in H x 2in W End Deck Post P/N PC6E1236
- 36in H x 2in W Inline Deck Post P/N PC6I1236
- 36in H x 2in W Corner Deck Post P/N PC6C1236
- 42in H x 2in W Inline Stair Post P/N PC6S1242



42IN SYSTEMS

- 42in H x 3in W End Deck Post P/N PC6E1342
- 42in H x 3in W Inline Deck Post P/N PC6I1342
- 42in H x 3in W Corner Deck Post P/N PC6C1342
- 48in H x 3in W Inline Stair Post P/N PC6S1348
- 48in H x 3in W Stair Bottom Post P/N PC6B1348

42IN CONTINUOUS SYSTEMS

- 42in H x 2in W End Deck Post P/N PC6E1242
- 42in H x 2in W Inline Deck Post P/N PC6I1242
- 42in H x 2in W Corner Deck Post P/N PC6C1242
- 48in H x 2in W Inline Stair Post P/N PC6S1248
- 48in H x 2in W Stair Bottom Post P/N PC6B1248

B=Black, W=White, Z=Bronze

Post-to-deck mount screws/anchors sold separately. 3in x 3in Posts actual lengths are 38.25in, 43.5in and 48in.

HORIZONTAL CABLE KITS

These kits are designed for the horizontal cable systems. Each kit includes: (1) 1/8in stainless steel cable with pre-attached threaded stud in 5ft to 60ft lengths (increments of 5ft), (1) 1/8in threaded receiver fitting, (1) 1/8in fast receiver fitting and (2) stainless end caps. Full Frame Kits require 9 cables. Top Rail Kits require 10 cables. If exceeding 60ft in length, another cable kit and two end posts are required to start another run.



HORIZONTAL CABLE KITS FOR 3IN POSTS

- | | | | |
|----------------------|----------------------|----------------------|----------------------|
| 5ft Kit P/N CW60305 | 20ft Kit P/N CW60320 | 35ft Kit P/N CW60335 | 50ft Kit P/N CW60350 |
| 10ft Kit P/N CW60310 | 25ft Kit P/N CW60325 | 40ft Kit P/N CW60340 | 55ft Kit P/N CW60355 |
| 15ft Kit P/N CW60315 | 30ft Kit P/N CW60330 | 45ft Kit P/N CW60345 | 60ft Kit P/N CW60360 |

HORIZONTAL CABLE KITS FOR 2IN POSTS

- | | | | |
|----------------------|----------------------|----------------------|----------------------|
| 5ft Kit P/N CW90205 | 20ft Kit P/N CW90220 | 35ft Kit P/N CW90235 | 50ft Kit P/N CW90250 |
| 10ft Kit P/N CW90210 | 25ft Kit P/N CW90225 | 40ft Kit P/N CW90240 | 55ft Kit P/N CW90255 |
| 15ft Kit P/N CW90215 | 30ft Kit P/N CW90230 | 45ft Kit P/N CW90245 | 60ft Kit P/N CW90260 |

CABLE TOOLS



Cable Gripper Tool TC097606



Horizontal Cable Tool Kit TK32750

Includes: cable threading tool, 90° cable threading tool and cable release tool.



Stainless Steel Cable Cutter TC697703

ALUMINUM POST KITS



3IN ALUMINUM POST KITS

Includes: assembled post and base plate, post cap and post base plate vinyl skirt.

36in H x 3in W P/N HK441336
 42in H x 3in W P/N HK441342
 48in H x 3in W P/N HK441348

B=Black, W=White, Z=Bronze

Post-to-deck mount screws/
 anchors sold separately.

3in x 3in Posts - Actual Lengths =
 38.25in, 43.5in and 48in.



2IN ALUMINUM POST KITS

Includes: assembled post and base plate, post base plate vinyl skirt, straight cross-over bracket and two #8 x 1.5in self-tapping screws.

36in H x 2in W P/N HK341236
 42in H x 2in W P/N HK341242
 48in H x 2in W P/N HK341248

B=Black, W=White, Z=Bronze

Post-to-deck mount screws/
 anchors sold separately.

2in x 2in Posts - Actual Lengths =
 34.06in, 39.625in and 48in.

GATE KITS



Kits include gate, self-closing hinges and keyed latching hardware.

BALUSTER GATE KITS

For openings up to 49in wide. Actual heights: 33.9in and 39.5in, actual width: 48in.

48in W x 36in H Baluster Gate Kit P/N HG07518
 48in W x 42in H Baluster Gate Kit P/N HG07520

VERTICAL CABLE GATE KITS

Adjustable width for openings up to 50in wide. Actual heights: 33.9in and 39.5in, actual width: 49in.

49in W x 36in H Vertical Cable Gate Kit P/N CG601349
 49in W x 42in H Vertical Cable Gate Kit P/N CG601449

HORIZONTAL CABLE GATE KITS

49in W x 36in H Horizontal Cable Gate Kit
 Adjustable width for openings up to 50in wide.
 Actual height: 33.9in, actual width: 49in. P/N CG681349

49in W x 42in H Horizontal Cable Gate Kit
 For 50in wide openings. **Width is not adjustable.**
 Actual height: 39.5in, actual width: 49in. P/N CG681449

B=Black, W=White, Z=Bronze

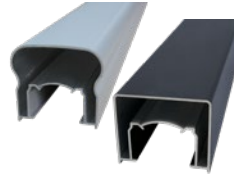


HARDWARE



RAIL CLIP JIG/TOUCH-UP PAINT

Ensures proper placement of the lower rail clips when attaching to posts. Touch-up paint is included for use when cutting extrusions. P/N HJ39700
B=Black, W=White, Z=Bronze



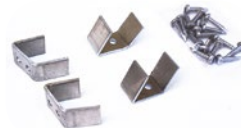
CONTINUOUS TOP RAIL SNAP

For use with continuous rail panels and 2in posts. 18ft Length. Victorian P/N VT393118
Alta P/N AL893118
B=Black, W=White, Z=Bronze



DECK & STAIR PANEL ATTACH KIT

Required when deck or stair panel is cut and attaching more than one section. P/N HC39500



22.5° PANEL ATTACH KIT

Required for 45° deck corners. Refer to installation instructions for proper post placement. P/N HC06422



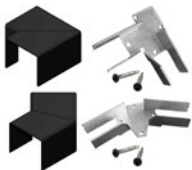
45° WALL MOUNT KIT

Required for 45° wall applications. Not to be used for post applications. P/N HC06445



STRAIGHT WALL MOUNT KIT FOR BALUSTER AND GLASS PANELS

Used to secure deck panels to structural surface without a post for support. Victorian P/N HC39100
Alta P/N HC89100
B=Black, W=White, Z=Bronze



ALTA CORNER KITS

90° Corner P/N HC801290
45° Corner P/N HC801245
B=Black, W=White, Z=Bronze



22.5° GLASS PANEL ATTACH KIT

Required for 45° deck corners. Refer to installation instructions for proper post placement. P/N HC03422
B=Black, W=White, Z=Bronze



GLASS PANEL ATTACH KIT

Required when deck panel is cut and attaching more than one section. P/N HC03400
B=Black, W=White, Z=Bronze



BOTTOM SNAP COLLAR KITS

For applications without a top snap. Cover mis-cuts to top or bottom rails. Deck P/N BH061202
Stair P/N BH051202
B=Black, W=White, Z=Bronze



CUT COLLAR KITS

For applications with a top snap. Cover mis-cuts to a top rail snap and bottom rail. Victorian Deck P/N VT361202
Victorian Stair P/N VT351202
Alta Deck P/N AL061202
Alta Stair P/N AL051202
B=Black, W=White, Z=Bronze



TOP RAIL END CAPS

For use with the continuous rail system. Victorian P/N VE19400
Alta P/N AL825101
B=Black, W=White, Z=Bronze

LIGHTING AND ACCESSORIES



3IN LED POST CAP PERIMETER LIGHT

.3 watts, 3 LEDS, 39 Lumens, 4,000 Kelvin
P/N: LE045310
B=Black, W=White, Z=Bronze



3IN LED POST CAP INDIRECT LIGHT

1.2 watts, 12 LEDS (3 LEDS per side), 156 Lumens, with an approximate effective Lumen output of 39 Lumens, 4,000 Kelvin
P/N: LE045311
B=Black, W=White, Z=Bronze



SOLAR 3IN LED POST CAP PERIMETER LIGHT

3 Lumens, 3,000 Kelvin
P/N: LSO45310
B=Black, W=White, Z=Bronze



3IN LOW PROFILE POST CAP

(without light)
P/N CC025303
B=Black, W=White, Z=Bronze



POWER PACK

12V 100W single tap, built in adjustable timer and photo cell.
P/N: LE095101



UR WIRE CONNECTORS

10 Pack. Replacement part; also included with post cap lights.
P/N LE095104



100FT 16/2 GA WIRE

P/N LE095103

REPLACEMENT PARTS

RAILING PANEL PARTS	
Victorian Top Rail Snap - 6ft	VT393106
Victorian Top Rail Snap - 8ft	VT393108
Alta Top Rail Snap - 6ft	AL893106
Alta Top Rail Snap - 8ft	AL893108
Bottom Rail Snap - 6ft	SH093106
Bottom Rail Snap - 8ft	SH093108
Victorian Continuous Top Rail Snap - 18ft Length	VT393118
Alta Continuous Top Rail Snap - 18ft Length	AL893118
SMALL PARTS	
Support Leg w/ color screw	SL09403K
3IN POST PARTS	
Base Plate Vinyl Skirt for 3in Post	BC015305
Post Cap for 3in Post (Standard)	CC044300
Low Profile 3in Post Cap	CC025303
2IN POST PARTS	
Base Plate Vinyl Skirt for 2in Post	BC015204
2in Crossover Bracket	CL044204
2in Stair Crossover Bracket	CL04425
HARDWARE	
#8x3/4in Self-tapping Screws 16/pack	ST09934K
#8 x 1-1/2in Self-tapping Screws - 20 pack	ST099320
#14 x 1-1/2in Self-tapping Screws - 20 pack	ST099520
M8 x 80mm Stainless Steel Hex Head (13mm) Screw - 1 ct.	SS009880
Vertical Cable Replacement Kit for Stair or Deck	VC681000K

B=Black, W=White, Z=Bronze (where applicable)

VERTICAL CABLE REPLACEMENT PARTS	
36in Vertical Cable Repair Kit	VC081000
Vertical Cable Tension Block & Set Screws	CR028101
Allen Wrench, M2.5 Short Arm, Vertical Cable	CRO07006
36in Vertical Cable Stiffener	RPO64136
42in Vertical Cable Stiffener	RPO64142
HORIZONTAL CABLE REPLACEMENT PARTS	
Cable Deck Support Picket	NPO63500
Cable Stair Support Picket	NP063501
Cable Deck Picket Plug	CR004301
Cable Stair Picket Plug	CR054301
Cable Stair Angle Washer	CRO04007
Cable Deck Post Hole Plug	CR004008
Cable Stair Post Hole Plug	CR004009
3in x 36in Cable 90° Corner Post Insert	BFO45536
0.25in Hole x 0.75in L Christmas Tree Clip - 0.728in Head	CL120262
1/8in T-316 Threaded Stud Receiver, 1/4in UNC thread (Body Length: 3-1/32in)	CRO04001
1/8in T-316 Cable Receiver (Body Length: 3-1/32in)	CRO04002
T-316 Bright Polished Fast Fitting Dome Cap	CR025001
Allen Wrench, M6, Horizontal Cable	CRO07007

B=Black, W=White, Z=Bronze (where applicable)

FOR COMPLETE INSTALLATION INSTRUCTIONS, VISIT HARMONYRAILING.COM.

ADA HANDRAILS



ADA PIPE RAIL AND 90° RETURN KIT

Kit includes:
 1 - 94in Pipe
 2 - 90° Wall Returns and Covers
 2 - 3in Post Backer Plates
 2 - Joiner Rings
 6 - #10 x 1.5in Self-tapping Screws
 4 - #8 x 3/4in Color Matched Self-tapping Screws
 Installation Instructions

P/N: AD901102
 B=Black, W=White, Z=Bronze



ADA PIPE RAIL EXTENSION KIT

Kit includes:
 1 - 94in Pipe
 2 - 6in Joiners
 2 - Joiner Rings
 2 - Rail Support Brackets with adapters and caps
 2 - 3in Post Backer Plates
 6 - #10 x 1-1/2in Self-tapping Screws
 8 - #8 x 3/4in Color Matched Self-tapping Screws
 Installation Instructions

P/N: AD901103
 B=Black, W=White, Z=Bronze



ADA 90° RETURN KIT

Required when Pipe Rail is cut into two pieces. Does not include 94in pipe rail.

Kit includes:
 2 - 90° Wall Returns and Covers
 2 - 3in Post Backer Plates
 2 - Joiner Rings
 6 - #10 x 1-1/2in Self-tapping Screws
 4 - #8 x 3/4in Color Matched Self-tapping Screws
 Installation Instructions

P/N: AD901101
 B=Black, W=White, Z=Bronze



ADA HANDICAP LOOP KIT

Kit includes:
 2 - Handicap Loops
 2 - Rail Support Brackets with adapters and caps
 2 - Adjustable Elbows
 2 - 3in Post Backer Plates
 12 - #8 x 3/4in Self-tapping Screws
 6 - #10 x 1-1/2in Self-tapping Screws
 Installation Instructions

P/N: AD901104
 B=Black, W=White, Z=Bronze

ADA HANDRAILS CAN BE USED FOR STAIRS, RAMPS AND HORIZONTAL APPLICATIONS.

FIND INSTRUCTIONS AND INSTALL VIDEOS AT HARMONYRAILING.COM.



ADA 1.5in x 94in Pipe Rail
 P/N AD903194

90° Wall Return
 P/N AD905118

ADA Support Bracket
 Use on 2in and 3in Posts.
 P/N AD908102

Inside Corner Mount
 P/N AD908599

ADA 6in Pipe Joiner
 P/N AD905178

ADA Handicap Loop
 P/N AD905168



Straight End Wall Mount
 P/N AD905128

ADA 90° Elbow
 P/N AD905158

ADA Adjustable Elbow
 P/N AD958204
 Order 4X #8x3/4in screws for each elbow (sold separately).

ADA 1.5in Joiner Ring
 P/N AD905188

ADA End Cap
 Available in black only.
 P/N AD905198

3in Post Backer Plate
 P/N AD905248



Rail to Bracket Attach Screws

#8 x 3/4in Self-tapping Screw. 20-pack. P/N ST091820
 B=Black, W=White, Z=Bronze



Bracket to Metal Post Attach Screws

#10 x 1-1/2in Self-tapping Screw. 20-pack. P/N ST091020



Support Bracket Attach Screws

#14 x 1-1/2in Self-tapping Screw. 20-pack. P/N ST099520

SCREEN RAIL SYSTEM



6FT W SCREEN RAIL PANEL KITS

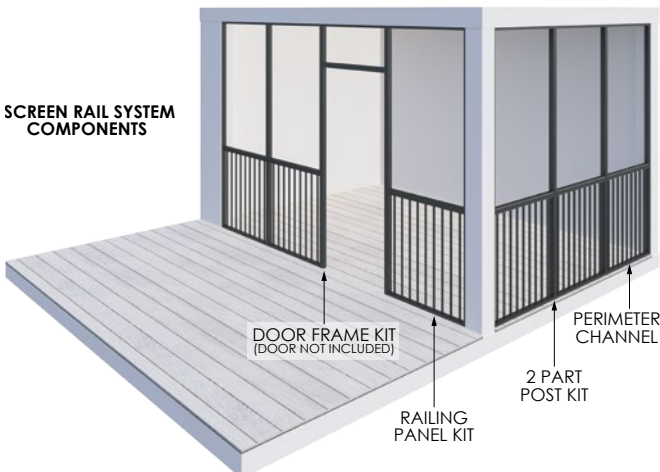
- 1 - 6ft W Screen Rail Panel
(Actual Length = 69.43in)
- 1 - 6ft Top Rail Snap
- 1 - 6ft Perimeter Channel
- 2 - Locating Blocks
- 6 - L Brackets
- 4 - #8 x 1in Self-tapping Screws
- 1 - 30ft x .315in Flat Screen Spline
- Installation Instructions
- 36in H Panel Kit - P/N: SK068306
- 42in H Panel Kit - P/N: SK068406
- B=Black, W=White, Z=Bronze



SCREEN RAIL PERIMETER CHANNEL KITS

- 2 - Perimeter Channels
- 8 - L Brackets
- 1 - 30ft x .315in Flat Screen Spline
- Installation Instructions
- 8.5ft Kit - P/N: SK002208
- 12ft Kit - P/N: SK002212
- B=Black, W=White, Z=Bronze

NOTE: Perimeter Channels may be used separately, without railings. However, most building codes require railings if screen enclosure is over 30in from ground level.



SCREEN RAIL POST KITS

- 1 - Screen Post
- 4 - L Brackets
- 8 - #8 x 1in Self-tapping Screws
- Installation Instructions
- Used in conjunction with railing panel kit if opening is over 6ft
- 8.5ft Kit - P/N: SK042208
- 12ft Kit - P/N: SK042212
- B=Black, W=White, Z=Bronze



SCREEN RAIL DOOR FRAME KITS

- 2 - Screen Posts
- 1 - Two-Piece 3ft Screen Post
- 1 - 3ft Perimeter Channel
- 4 - Locating Blocks
- 3 - L Brackets
- 8 - #8 x 1in Self-tapping Screws
- 1 - 30ft x .315in Flat Screen Spline
- Installation Instructions
- 8.5ft Kit - P/N: SK024208
- 12ft Kit - P/N: SK024212
- B=Black, W=White, Z=Bronze



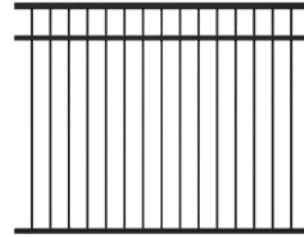
1/2in x 3/4in FENCE SYSTEM

Uses patented Ultralox Interlocking™ assembly

1/2in x 3/4in BALUSTER FENCE PANELS



48in H x 6ft W - P/N: HF621406



54in H x 6ft W - P/N: HF631506

Fence Panel Kits Include: Preassembled Fence Panel, Fence Cap (top rail cover), Panel Attach Kit for securing to two posts and Installation Instructions. Actual Panel Lengths: 6ft Panels = 69.43in, 8ft Panels = 91.31in. Actual Panel Heights: 48in Panels = 46.24in; 54in Panels = 52.12in.

1/2in x 3/4in BALUSTER FENCE GATES



48in H x 48in W - P/N: HG671448



54in H x 48in W - P/N: HG671454

Gate Kits Include: Pre-Assembled Gate Panel, Self-Closing Hinges, Keyed Latching Hardware, Installation Instructions. Actual Gate Lengths: 47in. Actual Gate Heights: 48in Gates = 49.9in; 54in Gates = 55.9in.

SURFACE MOUNT FENCE POSTS



48in H x 2in W - P/N: HP641248
48in H x 3in W - P/N: HP641348



54in H x 2in W - P/N: HP641254
54in H x 3in W - P/N: HP641354

BURIED FENCE POSTS



48in H x 2in W - P/N: HP641280
48in H x 3in W - P/N: HP641380



54in H x 2in W - P/N: HP641286
54in H x 3in W - P/N: HP641386

Surface Mount Fence Posts include: Pre-Assembled Post and Base Plate, Base Plate Plugs and Post Cap. Actual Surface Mount Post Heights: 48in Posts = 49.375in; 54in Posts = 55.375in.

Buried Fence Posts include Aluminum Fence Post and Post Cap. Actual Buried Post Heights: 48in Posts = 80in; 54in Posts = 86in.



FENCE ATTACH KIT

Required when fence panel is cut and attaching more than one section. P/N: HF671300



22.5° FENCE ATTACH KIT

Required for 45° fence corners. Refer to installation instructions for proper post placement. P/N: HF641322

For all parts on this page add: B=Black, W=White, Z=Bronze

All fencing is offered in an architectural grade powder coat. Contact your Harmony railing sales representative for all available sizes.

ALUMINUM FRAMING SYSTEM



DECK/BEAM COLUMN KIT (Under 5ft Tall) for (2) 5.5ft x 11ft (or 16ft) Kits

Main Components:

- (2) - 60in Deck Column - 4in x 4in x .25in - Colored
- (1) - 130in Deck Beam - 4in x 8in x .188in - Colored

Hardware Kit:

- (2) - Simpson Strong Tie 4in x 4in Column Base
- (2) - Simpson Strong Tie 4in x 4in Column Cap
- (4) - 1/2in-13 x 5.5in Hex Bolt
- (8) - 1/2in Flat Washer
- (2) - 1/2in-13 Hex Nut
- (80) - 1/4in-20 x 1in SS Self-Tapping Screw
- (1) - Screw Wax - 2in x 6in Tube
- (6) - 4in W x 14in L Long Rubber Membrane
- (16) - Deck Joist to Beam Bracket - Mill Finish
- (2) - 4in x 8in Deck Beam Cap - Colored

P/N: DA002051 B=Black, W=White, Z=Bronze



DECK/BEAM COLUMN KIT (Under 5ft Tall) for (3) 5.5ft x 11ft (or 16ft) Kits

Main Components:

- (3) - 60in Deck Column - 4in x 4in x .25in - Colored
- (1) - 194in Deck Beam - 4in x 8in x .188in - Colored

Hardware Kit:

- (3) - Simpson Strong Tie 4in x 4in Column Base
- (3) - Simpson Strong Tie 4in x 4in Column Cap
- (6) - 1/2in-13 x 5.5in Hex Bolt
- (12) - 1/2in Flat Washer
- (3) - 1/2in-13 Hex Nut
- (120) - 1/4in-20 x 1in Self-tapping Screw SS with Stalgard GB
- (1) - Screw Wax - 2in x 6in Tube
- (9) - 4in W x 14in L Long Rubber Membrane
- (24) - Deck Joist to Beam Bracket - Mill Finish
- (2) - 4in x 8in Deck Beam Cap - Colored

P/N: DA003051 B=Black, W=White, Z=Bronze

DECK/BEAM COLUMN KIT (Over 5ft Tall) for (2) 5.5ft x 11ft (or 16ft) Kits

Main Components:

- (2) - 120in Deck Column 6in x 6in x .25in - Colored
- (1) - 130in Deck Beam 6in x 6in x .25in - Colored

Hardware Kit:

- (2) - Simpson Strong Tie 6in x 6in Column Base
- (2) - Simpson Strong Tie 6in x 6in Column Cap
- (4) - 1/2in-13 x 7.5in Hex Bolt
- (8) - 1/2in Flat Washer
- (4) - 1/2in-13 Hex Nut
- (96) - 1/4in-20 x 1in SS Self-Tapping Screw with Stalgard GB
- (1) - Screw Wax - 2in x 6in Tube
- (6) - 6in W x 18in L Rubber Membrane
- (16) - Deck Joist to Beam Bracket - Mill Finish
- (2) - 6in x 6in Deck Beam Cap - Colored

P/N: DA002151 B=Black, W=White, Z=Bronze

DECK/BEAM COLUMN KIT (Over 5ft Tall) for (3) 5.5ft x 11ft (or 16ft) Kits

Main Components:

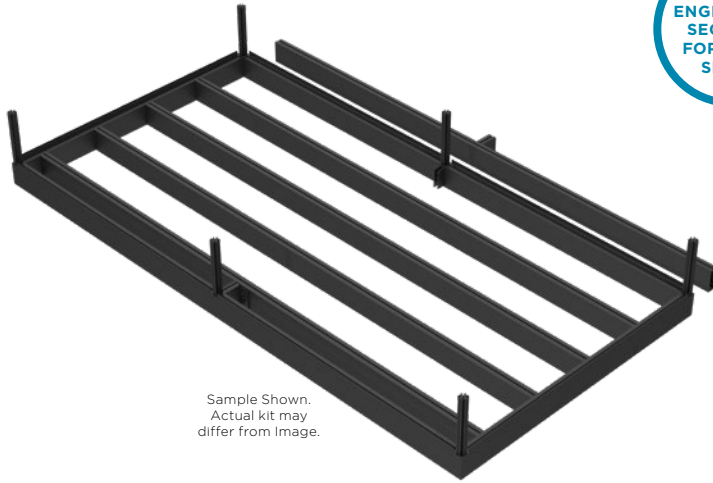
- (3) - 120in Deck Column 6in x 6in x .25in - Colored
- (1) - 194in Deck Beam 6in x 6in x .25in - Colored

Hardware Kit:

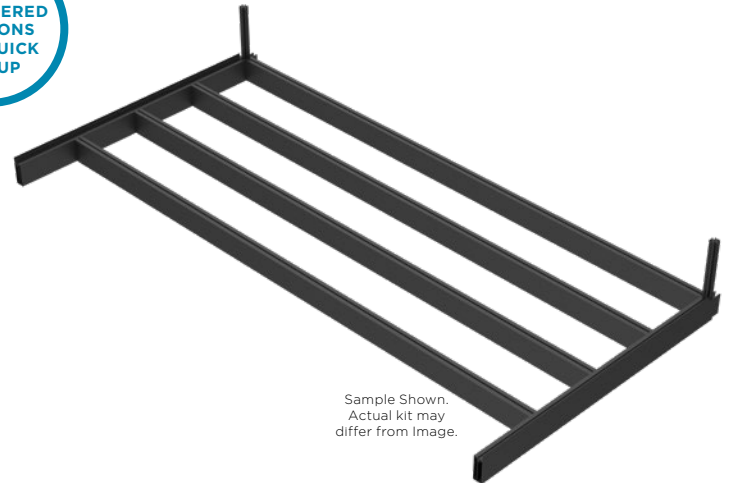
- (3) - Simpson Strong Tie 6in x 6in Column Base
- (3) - Simpson Strong Tie 6in x 6in Column Cap
- (6) - 1/2in-13 x 7.5in Hex Bolt
- (12) - 1/2in Flat Washer
- (6) - 1/2in-13 Hex Nut
- (144) - 1/4in-20 x 1in SS Self-Tapping Screw with Stalgard GB
- (1) - Screw Wax - 2in x 6in Tube
- (9) - 6in W x 18in L Rubber Membrane
- (24) - Deck Joist to Beam Bracket - Mill Finish
- (2) - 6in x 6in Deck Beam Cap - Colored

P/N: DA003151 B=Black, W=White, Z=Bronze

PRE-ENGINEERED SECTIONS FOR QUICK SET UP



Sample Shown. Actual kit may differ from image.



Sample Shown. Actual kit may differ from image.

66IN X 130IN RESIDENTIAL DECK STARTER KIT

Main Components:

- (6) - 62in Deck Perimeter Channel With Routes - Colored
- (5) - 126in Deck Single Joist With Routes - Colored
- (4) - 62in Deck Joist Spacer - Colored
- (1) - 62in Deck Perimeter Starter Trim (Composite Decking) - Colored
- (4) - 62in Deck Perimeter Flat Trim (Composite Decking) - Colored

Hardware Kit #1:

- (1) - 4in Deck Perimeter Channel No Routes - Colored
- (1) - 3.73in Deck Joist Spacer - Colored
- (2) - 4in Deck Joist Spacer - Colored
- (2) - 8in Deck Joist Spacer - Colored
- (6) - 14in Deck Joist Spacer - Colored
- (2) - 3.98in Deck Anti-Lift Clip - Mill Finish
- (2) - 9.98in Deck Anti-Lift Clip - Mill Finish
- (4) - 14.48in Deck Anti-Lift Clip - Mill Finish
- (2) - 15.98in Deck Anti-Lift Clip - Mill Finish
- (2) - 2in Deck Corner Tube - Colored
- (1) - 2in Deck Intermediate 3way Tube - Colored
- (4) - 18in Deck Stanchion for 2in Post - Mill Finish
- (1) - 3inx2inx.25in Deck Blocking Joist Bracket - Colored

- (8) - Deck Joist End Cap - Colored
- (33) - #14 x 1.25in Hex Head Type AB SS Self-Tapping Screw
- (39) - 1/4in-20 x 1in SS Self-Tapping Screw with Stalgard GB

Hardware Kit #2:

- (1) - 4in Deck Perimeter Channel No Routes - Colored
- (1) - 3.73in Deck Joist Spacer - Colored
- (2) - 4in Deck Joist Spacer - Colored
- (2) - 8in Deck Joist Spacer - Colored
- (2) - 3.98in Deck Anti-Lift Clip - Mill Finish
- (2) - 9.98in Deck Anti-Lift Clip - Mill Finish
- (2) - 2in Deck Corner Tube - Colored
- (1) - 2in Deck Intermediate 3way Tube - Colored
- (2) - 18in Deck Stanchion for 2in Post - Mill Finish
- (1) - 3inx2inx.25in Deck Blocking Joist Bracket - Colored
- (2) - Deck Joist End Cap - Colored
- (11) - #14 x 1.25in Hex Head Type AB SS Self-Tapping Screw
- (15) - 1/4in-20 x 1in SS Self-Tapping Screw with Stalgard GB

P/N: DA008510

B=Black, W=White, Z=Bronze

66IN X 194IN RESIDENTIAL DECK STARTER KIT

Main Components:

- (8) - 62in Deck Perimeter Channel With Routes - Colored
- (5) - 190in Deck Single Joist With Routes - Colored
- (6) - 62in Deck Joist Spacer - Colored
- (1) - 62in Deck Perimeter Starter Trim (Composite Decking) - Colored
- (6) - 62in Deck Perimeter Flat Trim (Composite Decking) - Colored

Hardware Kit #1:

- (1) - 4in Deck Perimeter Channel No Routes - Colored
- (1) - 3.73in Deck Joist Spacer - Colored
- (2) - 4in Deck Joist Spacer - Colored
- (2) - 8in Deck Joist Spacer - Colored
- (6) - 14in Deck Joist Spacer - Colored
- (2) - 3.98in Deck Anti-Lift Clip - Mill Finish
- (2) - 9.98in Deck Anti-Lift Clip - Mill Finish
- (2) - 13.98in Deck Anti-Lift Clip - Mill Finish
- (2) - 15.98in Deck Anti-Lift Clip - Mill Finish
- (2) - 2in Deck Corner Tube - Colored
- (2) - 2in Deck Intermediate 3way Tube - Colored
- (5) - 18in Deck Stanchion for 2in Post - Mill Finish
- (2) - 3inx2inx.25in Deck Blocking Joist Bracket - Colored
- (8) - Deck Joist End Cap - Colored

- (54) - #14 x 1.25in Hex Head Type AB SS Self-Tapping Screw
- (39) - 1/4in-20 x 1in SS Self-Tapping Screw with Stalgard GB

Hardware Kit #2:

- (1) - 4in Deck Perimeter Channel No Routes Black
- (1) - 3.73in Deck Joist Spacer Black
- (1) - 4in Deck Joist Spacer Black
- (2) - 8in Deck Joist Spacer Black
- (2) - 3.98in Deck Anti-Lift Clip Mill
- (2) - 9.98in Deck Anti-Lift Clip Mill
- (2) - 2in Deck Corner Tube Black
- (2) - 2in Deck Intermediate 3way Tube Black
- (3) - 18in Deck Stanchion for 2in Post Mill
- (2) - 3inx2inx.25in Deck Blocking Joist Bracket Black
- (2) - Deck Joist End Cap Black
- (30) - #14 x 1.25in Hex Head Type AB SS Self-tapping Screw
- (15) - 1/4in-20 x 1in SS Self-tapping Screw with Stalgard GB

P/N: DA008560

B=Black, W=White, Z=Bronze

64IN X 130IN RESIDENTIAL DECK ADDITION KIT

Main Components:

- (2) - 62in Deck Perimeter Channel With Routes - Colored
- (1) - 126in Deck Perimeter Channel With Routes - Colored
- (3) - 126in Deck Single Joist With Routes - Colored
- (1) - 126in Deck Joist Spacer - Colored
- (1) - 62in Deck Perimeter Starter Trim (Composite Decking) - Colored

Hardware Kit:

- (8) - 14in Deck Joist Spacer - Colored
- (4) - 13.98in Deck Anti-Lift Clip - Mill Finish
- (2) - 15.98in Deck Anti-Lift Clip - Mill Finish
- (2) - 2in Deck Intermediate 3way Tube - Colored
- (1) - 18in Deck Stanchion for 2in Post - Mill Finish
- (6) - Deck Joist End Cap - Colored
- (21) - #14 x 1.25in Hex Head Type AB SS Self-Tapping Screw
- (18) - 1/4in-20 x 1in SS Self-Tapping Screw with Stalgard GB

P/N: DA008511

B=Black, W=White, Z=Bronze

64IN X 194IN RESIDENTIAL DECK ADDITION KIT

Main Components:

- (2) - 62in Deck Perimeter Channel With Routes - Colored
- (1) - 190in Deck Perimeter Channel With Routes - Colored
- (3) - 190in Deck Single Joist With Routes - Colored
- (1) - 190in Deck Joist Spacer - Colored
- (1) - 62in Deck Perimeter Starter Trim (Composite Decking) - Colored

Hardware Kit:

- (8) - 14in Deck Joist Spacer - Colored
- (4) - 13.98in Deck Anti-Lift Clip - Mill Finish
- (2) - 15.98in Deck Anti-Lift Clip - Mill Finish
- (2) - 2in Deck Intermediate 3way Tube - Colored
- (1) - 18in Deck Stanchion for 2in Post - Mill Finish
- (6) - Deck Joist End Cap - Colored
- (21) - #14 x 1.25in Hex Head Type AB SS Self-Tapping Screw
- (18) - 1/4in-20 x 1in SS Self-Tapping Screw with Stalgard GB

P/N: DA008561

B=Black, W=White, Z=Bronze

HARMONY RAILING™ BALUSTER PLANNER

(36IN HIGH SYSTEM SHOWN)



POST-TO-SURFACE MOUNTING SCREWS:

RESIDENTIAL DECKS – 5/16" X 6" EXTERIOR TORX/STAR DRIVE CONSTRUCTION SCREWS
 COMMERCIAL DECKS – 3/8" X 6" EXTERIOR TORX/STAR DRIVE CONSTRUCTION SCREWS
 RESIDENTIAL CONCRETE – TAPCON® 5/16" X 3" HEX WASHER HEAD CONCRETE ANCHOR

WHAT YOU WILL NEED	VICT. P/N	ALTA P/N	QTY
PREASSEMBLED ALUMINUM BALUSTER PANELS			
6ft x 36in Baluster Panel (actual length 69.43in)	HR362306	HR862306	
6ft x 42in Baluster Panel (actual length 69.43in)	HR362406	HR862406	
8ft x 36in Baluster Panel (actual length 91.31in)	HR362308	HR862308	
8ft x 42in Baluster Panel (actual length 91.31in)	HR362408	HR862408	
6ft x 36in Continuous Rail (act. lgth 69.43in)*		HR062306	
6ft x 42in Continuous Rail (act. lgth 69.43in)*		HR062406	
8ft x 36in Continuous Rail (act. lgth 91.31in)*		HR062308	
8ft x 42in Continuous Rail (act. lgth 91.31in)*		HR062408	
PREASSEMBLED ALUMINUM BALUSTER STAIR PANELS			
6ft x 36in Stair Panel (actual length 69.43in)	HS352306	HS852306	
8ft x 36in Stair Panel (actual length 91.31in)	HS352308	HS852308	
6ft x 36in Continuous Stair Panel (69.43in)*		HS052306	
6ft x 42in Continuous Stair Panel (69.43in)*		HS052406	
8ft x 36in Continuous Stair Panel (91.31in)*		HS052308	
8ft x 42in Continuous Stair Panel (91.31in)*		HS052408	

*Top rails sold separately with Continuous Rail and Continuous Stair Panels.

Part Number Plus Color Identifier: B=Black, W=White, Z=Bronze

WHAT YOU WILL NEED	VICT. P/N	ALTA P/N	QTY
ALUMINUM POST KITS			
INCLUDES: POST AND BASE PLATE, POST CAP, AND POST BASE VINYL SKIRT.			
36in x 3in Post Kit (actual length 38.25in)		HK441336	
42in x 3in Post Kit (actual length 43.5in)		HK441342	
48in x 3in Post Kit (actual length 48in)		HK441348	
36in x 2in Post Kit (actual length 34.06in)		HK341236	
42in x 2in Post Kit (actual length 39.625in)		HK341242	
48in x 2in Post Kit (actual length 48in)		HK341248	
ADDITIONAL KITS			
Continuous Top Rail - 18ft (B,W,Z)	VT393118	AL893118	
Wood Grain Continuous Top Rail - 18ft (G,O)	VT393118	N/A	
Wood Grain Top Rail - 8ft (G,O)	VT393108	N/A	
Deck & Stair Panel Attach Kit		HC39500	
22.5° Panel Attach Kit		HC06422	
45° Wall Mount Kit		HC06445	
Straight Wall Mount Kit	HC39100	HC89100	
Rail Clip Jig/Touch-Up Paint		HJ39700	
36in Gate Kit (adjustable up to 48in wide for 49in openings)		CG601349	
42in Gate Kit (adjustable up to 48in wide for 49in openings)		CG601449	

Prior to construction, check with your local regulatory agency for special code requirements in your area. Common railing height is 36in or 42in. Never span posts more than 8ft on center for baluster railing systems and 6ft on center for glass railing systems. Always ensure there is proper blocking under each post as per installation instructions. Read installation instructions and view installation videos to get a complete understanding of how the Harmony Railing™ products assemble. Written installation instructions and videos can be found online at HarmonyRailing.com.

HELPFUL ORDERING INFORMATION:

- Baluster section kits include attachment clips and screws. If panels are cut and two pieces are used for installation, a separate attachment kit must be purchased.
- Anchors and fasteners to secure posts to concrete or wood are **NOT INCLUDED** in kits.
- Maximum post spacing on deck for baluster railing is 8ft on center and glass railing is 6ft on center.
- If using 1/4in tempered glass panel kit, glass panels must be purchased separately from a local glass company.

IMPORTANT NOTES:

- Actual baluster panel sizes: 6ft Panels = 69.43in; 8ft Panels = 91.31in.
- 3in posts are required to reach 6ft & 8ft lengths.
- Stair railing panels are shipped at a 37° angle. Panels are adjustable and will accommodate 30-40° stair angles.
CAUTION: Over adjusting stair panels will cause loose and rattling balusters.
- 45° deck angles require 22.5° clips applied to each side of the post. The 22.5° clip kit is sold **SEPARATELY**.
- Using 2 Posts at top of stairs is recommended if compound angle cut is required.

1/4IN TEMPERED GLASS RAILING PLANNER

(36IN HIGH SYSTEM SHOWN)



WHAT YOU WILL NEED	VICT. P/N	ALTA P/N	QTY
GLASS FRAME SECTIONS			
6ft Aluminum Frame for Full 1/4in Tempered Glass Panel (Actual length 69.43in, Top Rail not included)	HGO31206		
Top Rail Snap - 69.43in	VT393106	AL893106	
1/4in Tempered Glass Panels (Must be ordered from a local glass company)	N/A	N/A	
PREASSEMBLED ALUMINUM BALUSTER STAIR PANELS			
6ft x 36in Stair Panel (actual length 69.43in)	HS352306	HS852306	
8ft x 36in Stair Panel (actual length 91.31in)	HS352308	HS852308	
6ft x 36in Continuous Stair Panel (69.43in)*	HS052306		
6ft x 42in Continuous Stair Panel (69.43in)*	HS052406		
8ft x 36in Continuous Stair Panel (91.31in)*	HS052308		
8ft x 42in Continuous Stair Panel (91.31in)*	HS052408		

*Top rails sold separately with Glass Frame Sections, Continuous Rail and Continuous Stair Panels.

Part Number Plus Color Identifier: B=Black, W=White, Z=Bronze

WHAT YOU WILL NEED	VICT. P/N	ALTA P/N	QTY
ALUMINUM POST KITS			
INCLUDES: POST AND BASE PLATE, POST CAP, AND POST BASE VINYL SKIRT.			
36in x 3in Post Kit (actual length 38.25in)		HK441336	
42in x 3in Post Kit (actual length 43.5in)		HK441342	
48in x 3in Post Kit (actual length 48in)		HK441348	
36in x 2in Post Kit (actual length 34.06in)		HK341236	
42in x 2in Post Kit (actual length 39.625in)		HK341242	
48in x 2in Post Kit (actual length 48in)		HK341248	
ADDITIONAL KITS			
Continuous Top Rail - 18ft (B,W,Z)	VT393118	AL893118	
Wood Grain Continuous Top Rail - 18ft (G,O)	VT393118	N/A	
Wood Grain Top Rail - 8ft (G,O)	VT393108	N/A	
Glass Panel Attach Kit		HCO3400	
22.5° Glass Panel Attach Kit		HCO3422	
45° Wall Mount Kit		HCO6445	
Straight Wall Mount Kit	HC39100	HC89100	
Rail Clip Jig/Touch-Up Paint		HJ39700	
36in Gate Kit (adjustable up to 48in wide for 49in openings)		CG681349	
42in Gate Kit (adjustable up to 48in wide for 49in openings)		CG681449	

Prior to construction, check with your local regulatory agency for special code requirements in your area. Common railing height is 36in or 42in. Never span posts more than 8ft on center for baluster railing systems and 6ft on center for glass railing systems. Always ensure there is proper blocking under each post as per installation instructions. Read installation instructions and view installation videos to get a complete understanding of how the Harmony Railing™ products assemble.

Written installation instructions and videos can be found online at HarmonyRailing.com.

HELPFUL ORDERING INFORMATION:

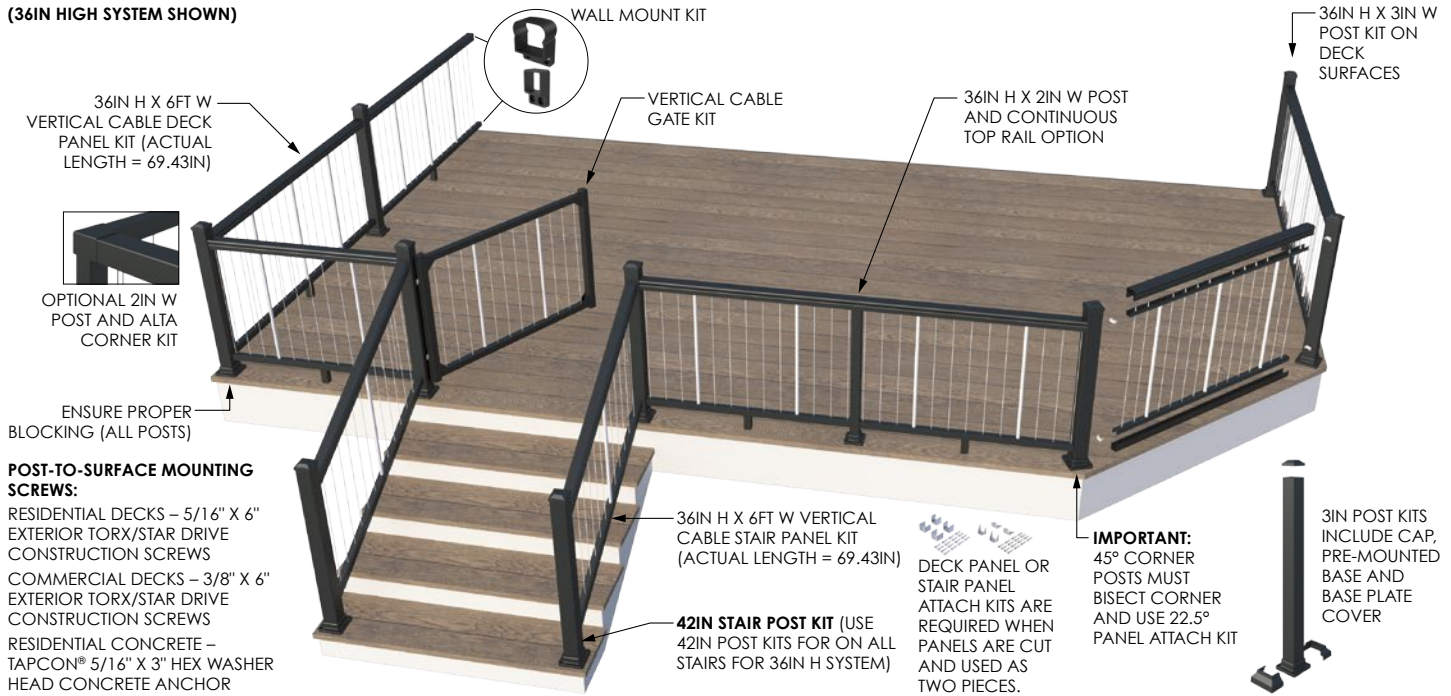
- Baluster section kits include attachment clips and screws. If panels are cut and two pieces are used for installation, a separate attachment kit must be purchased.
- Anchors and fasteners to secure posts to concrete or wood are **NOT INCLUDED** in kits.
- Maximum post spacing on deck for baluster railing is 8ft on center and glass railing is 6ft on center.
- If using 1/4in tempered glass panel kit, glass panels must be purchased separately from a local glass company.

IMPORTANT NOTES:

- Actual baluster panel sizes: 6ft Panels = 69.43in; 8ft Panels = 91.31in.
- 3in posts are required to reach 6ft & 8ft lengths.
- Stair railing panels are shipped at a 37° angle. Panels are adjustable and will accommodate 30-40° stair angles.
CAUTION: Over adjusting stair panels will cause loose and rattling balusters.
- 45° deck angles require 22.5° clips applied to each side of the post. The 22.5° clip kit is sold **SEPARATELY**.
- Using 2 Posts at top of stairs is recommended if compound angle cut is required.

VERTICAL CABLE RAILING PLANNER

(36IN HIGH SYSTEM SHOWN)



POST-TO-SURFACE MOUNTING SCREWS:

RESIDENTIAL DECKS – 5/16" X 6" EXTERIOR TORX/STAR DRIVE CONSTRUCTION SCREWS
 COMMERCIAL DECKS – 3/8" X 6" EXTERIOR TORX/STAR DRIVE CONSTRUCTION SCREWS
 RESIDENTIAL CONCRETE – TAPCON® 5/16" X 3" HEX WASHER HEAD CONCRETE ANCHOR

WHAT YOU WILL NEED	VICT. P/N	ALTA P/N	QTY
VERTICAL CABLE RAILING PANELS			
36in H x 6ft W Vertical Cable Panel (act. length 69.43in)	VC662306	VC162306	
36in H x 6ft W Vertical Cable Stair Panel (act. length 69.43in)	VC652306	VC152306	
36in H x 8ft W Vertical Cable Panel (act. length 91.31in)	VC662308	VC162308	
42in H x 6ft W Vertical Cable Panel (act. length 69.43in)	VC662406	VC162406	
42in H x 6ft W Vertical Cable Stair Panel (act. length 69.43in)	VC652406	VC152406	
42in H x 8ft W Vertical Cable Panel (act. length 91.31in)	VC662408	VC162408	
ALUMINUM POST KITS INCLUDES: POST AND BASE PLATE, POST CAP, AND POST BASE VINYL SKIRT.			
36in H x 3in W Post Kit (actual length 38.25in)	HK441336		
42in H x 3in W Post Kit (actual length 43.5in)	HK441342		
48in H x 3in W Post Kit (actual length 48in)	HK441348		
36in H x 2in W Post Kit (actual length 34.06in)	HK341236		
42in H x 2in W Post Kit (actual length 39.625in)	HK341242		
48in H x 2in W Post Kit (actual length 48in)	HK341248		

WHAT YOU WILL NEED	VICT. P/N	ALTA P/N	QTY
ADDITIONAL KITS			
Top Rail Snap - 6ft	VT393106	AL893106	
Deck & Stair Panel Attach Kit		HC39500	
22.5° Panel Attach Kit		HC06422	
45° Wall Mount Kit		HC06445	
Straight Wall Mount Kit	HC39100	HC89100	
Rail Clip Jig/Touch-Up Paint		HJ39700	
36in H Gate Kit (adjustable up to 49in wide for 50in openings)		HG07518	
42in H Gate Kit (adjustable up to 49in wide for 50in openings)		HG07520	

Part Number Plus Color Identifier: B=Black, W=White, Z=Bronze

Prior to construction, check with your local regulatory agency for special code requirements in your area. Common railing height is 36in or 42in. Never span posts more than 8ft on center for baluster railing systems and 6ft on center for glass railing systems. Always ensure there is proper blocking under each post as per installation instructions. Read installation instructions and view installation videos to get a complete understanding of how the Harmony Railing™ products assemble.

HELPFUL ORDERING INFORMATION:

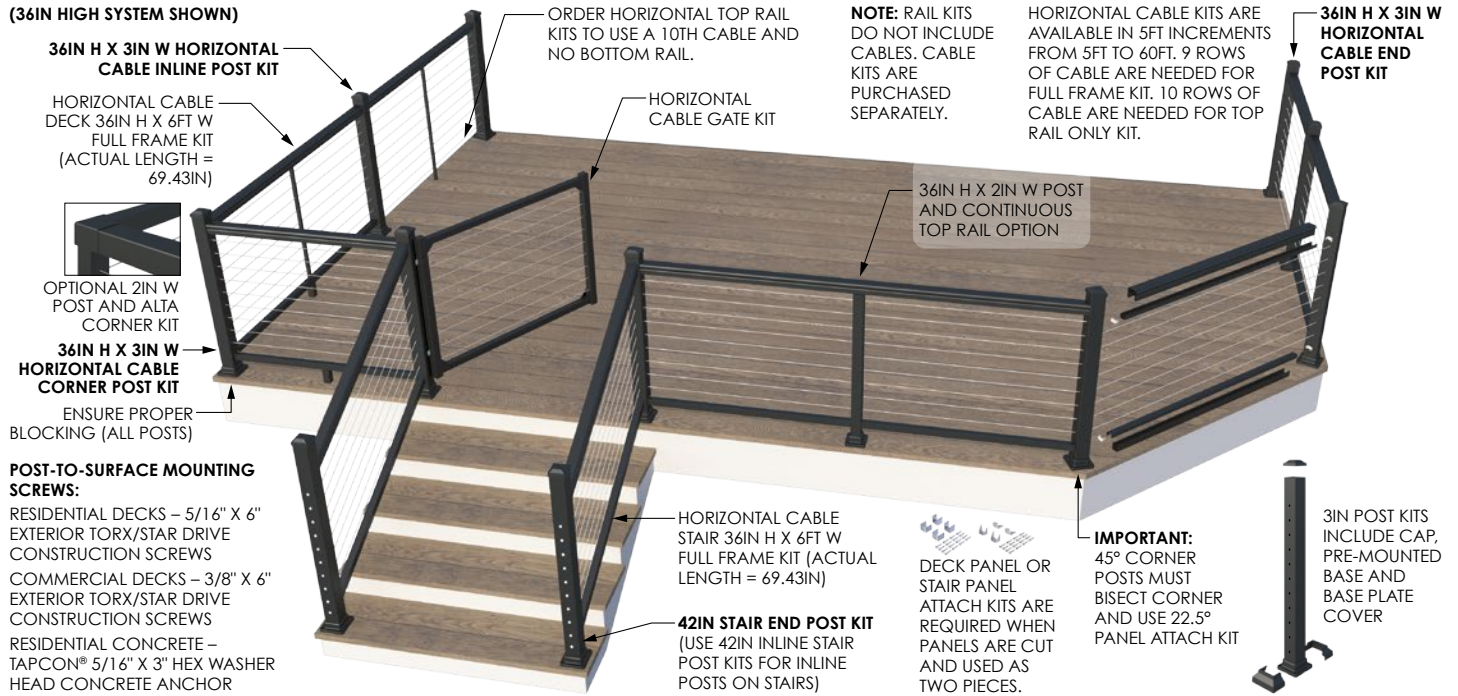
- Baluster section kits include attachment clips and screws. If panels are cut and two pieces are used for installation, a separate attachment kit must be purchased.
- Anchors and fasteners to secure posts to concrete or wood are **NOT INCLUDED** in kits.
- Maximum post spacing on deck for vertical cable railing is 6ft on center.

Written installation instructions and videos can be found online at HarmonyRailing.com.

IMPORTANT NOTES:

- Actual panel lengths: 6ft Panels = 69.43in; 8ft Panels = 91.31in.
- 3in posts are required to reach 6ft lengths.
- Stair railing panels will accommodate 30-40° stair angles.
- 45° deck angles require 22.5° clips applied to each side of the post. The 22.5° clip kit is sold **SEPARATELY**.
- Using 2 Posts at top of stairs is recommended if compound angle cut is required.

HORIZONTAL CABLE RAILING PLANNER



WHAT YOU WILL NEED	VICT. P/N	ALTA P/N	QTY
HORIZONTAL CABLE RAILING FRAME KITS			
36in / 42in H x 6ft W Horizontal Cable Deck Full Frame Kit	TF661306	TF161306	
36in / 42in H x 6ft W Horizontal Cable Deck Top Rail Kit	TR661306	TR161306	
36in / 42in H x 8ft W Horizontal Cable Deck Full Frame Kit	TF661308	TF161308	
36in / 42in H x 8ft W Horizontal Cable Deck Top Rail Kit	TR661308	TR161308	
36in / 42in H x 6ft W Horizontal Cable Stair Full Frame Kit	TF651306	TF151306	
36in / 42in H x 6ft W Horizontal Cable Stair Top Rail Kit	TR651306	TR151306	
36in / 42in H x 8ft W Horizontal Cable Stair Full Frame Kit	TF651308	TF151308	
36in / 42in H x 8ft W Horizontal Cable Stair Top Rail Kit	TR651308	TR151308	
HORIZONTAL CABLE KITS			
5ft Horizontal Cable Kit for 3in posts	CW60305		
10ft Horizontal Cable Kit for 3in posts	CW60310		
15ft Horizontal Cable Kit for 3in posts	CW60315		
20ft Horizontal Cable Kit for 3in posts	CW60320		
25ft Horizontal Cable Kit for 3in posts	CW60325		
30ft Horizontal Cable Kit for 3in posts	CW60330		
35ft Horizontal Cable Kit for 3in posts	CW60335		
40ft Horizontal Cable Kit for 3in posts	CW60340		
45ft Horizontal Cable Kit for 3in posts	CW60345		
50ft Horizontal Cable Kit for 3in posts	CW60350		
55ft Horizontal Cable Kit for 3in posts	CW60355		
60ft Horizontal Cable Kit for 3in posts	CW60360		
5ft Horizontal Cable Kit for 2in posts	CW90205		
10ft Horizontal Cable Kit for 2in posts	CW90210		
15ft Horizontal Cable Kit for 2in posts	CW90215		
20ft Horizontal Cable Kit for 2in posts	CW90220		
25ft Horizontal Cable Kit for 2in posts	CW90225		
30ft Horizontal Cable Kit for 2in posts	CW90230		
35ft Horizontal Cable Kit for 2in posts	CW90235		
40ft Horizontal Cable Kit for 2in posts	CW90240		
45ft Horizontal Cable Kit for 2in posts	CW90245		
50ft Horizontal Cable Kit for 2in posts	CW90250		
55ft Horizontal Cable Kit for 2in posts	CW90255		
60ft Horizontal Cable Kit for 2in posts	CW90260		

Prior to construction, check with your local regulatory agency for special code requirements in your area. Common railing height is 36in or 42in. Never span posts more than 8ft on center for horizontal cable railing systems. Always ensure there is proper blocking under each post as per installation instructions. Read installation instructions and view installation videos to get a complete understanding of how the Harmony Railing™ products assemble.

HELPFUL ORDERING INFORMATION:

- Frame kits include attachment tools and screws. If panels are cut and two pieces are used for installation, a separate attachment kit must be purchased.
- Anchor bolts and fasteners to secure posts to concrete or wood are **NOT INCLUDED** in kits.
- Maximum post spacing on deck and stairs for horizontal cable railing is 8ft on center.

WHAT YOU WILL NEED	VICT. P/N	ALTA P/N	QTY
HORIZONTAL CABLE ALUMINUM POST KITS			
INCLUDES: POST AND BASE PLATE, POST CAP, AND POST BASE VINYL SKIRT.			
36in H x 3in W Horizontal Cable End Post Kit		PC6E1336	
36in H x 3in W Horizontal Cable Inline Post Kit		PC6I1336	
36in H x 3in W Horizontal Cable Corner Post Kit		PC6C1336	
42in H x 3in W Horizontal Cable Inline Stair Post Kit		PC6S1342	
42in H x 3in W Horizontal Cable Stair Bottom Post Kit		PC6B1342	
42in H x 3in W Horizontal Cable End Post Kit		PC6E1342	
42in H x 3in W Horizontal Cable Inline Post Kit		PC6I1342	
42in H x 3in W Horizontal Cable Corner Post Kit		PC6C1342	
48in H x 3in W Horizontal Cable Inline Stair Post Kit		PC6S1348	
48in H x 3in W Horizontal Cable Stair Bottom Post Kit		PC6B1348	
36in H x 2in W Horizontal Cable End Post Kit		PC6E1236	
36in H x 2in W Horizontal Cable Inline Post Kit		PC6I1236	
36in H x 2in W Horizontal Cable Corner Post Kit		PC6C1236	
42in H x 2in W Horizontal Cable Inline Stair Post Kit		PC6S1242	
42in H x 2in W Horizontal Cable End Post Kit		PC6E1242	
42in H x 2in W Horizontal Cable Inline Post Kit		PC6I1242	
42in H x 2in W Horizontal Cable Corner Post Kit		PC6C1242	
48in H x 2in W Horizontal Cable Inline Stair Post Kit		PC6S1248	
TOOLS			
Cable Gripper Tool		TC097606	
Horizontal Cable Tool Kit. Includes: cable threading tool, 90° cable threading tool and cable release tool.		TK32750	
Stainless Steel Cable Cutter		TC697703	
ADDITIONAL KITS			
Top Rail Snap - 6ft	VT393106	AL893106	
Deck & Stair Panel Attach Kit		HC39500	
22.5° Panel Attach Kit		HC06422	
Rail Clip Jig/Touch-Up Paint		HJ39700	
36in H Gate Kit (adjustable up to 49in wide for 50in openings)		HG07518	
42in H Gate Kit (Width is not adjustable. Actual width: 49in wide for 50in openings)		HG07520	

Part Number Plus Color Identifier: B=Black, W=White, Z=Bronze

IMPORTANT NOTES:

- Actual panel lengths: 6ft Panels = 69.43in; 8ft Panels = 91.31in.
- 3in posts are required to reach 6ft & 8ft lengths.
- 45° deck angles require 22.5° clips applied to each side of the post. The 22.5° clip kit is sold **SEPARATELY**.
- Using 2 Posts at top of stairs is recommended if compound angle cut is required.

TOOLS RECOMMENDED FOR INSTALLATION



Cordless Drill
(hammer drill for concrete)



Level



Tape Measure and
Pencil



Safety Glasses



Bar Clamps



Miter Saw
(with nonferrous blade)



84-Tooth Nonferrous
Blade



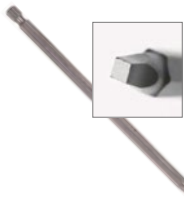
3/16in Drill Bit



3/16in Masonry Drill Bit
(concrete applications)



5/16in & 5/8in Drill Bits
(for LED Lighting application)



6in #2 Square Drive Bit



Horizontal Cable
Tool Kit



Cable Gripper Tool



Stainless Steel Cable
Cutter

SYSTEM EVALUATION

Harmony Railing™ (Harmony) aluminum baluster systems have been evaluated for structural integrity by an independent laboratory as per ICC-ES AC273 - acceptance criteria (approved/ revised October 2020) for handrails and guards. The Harmony aluminum railing systems have been evaluated with 1/2in x 3/4in aluminum balusters (6063-T5) assembled using the patented Ultralox Interlocking™ assembly process by which guardrail infill components are press-locked together. Harmony's 1/4in tempered glass panel system (ANSI Z97.1 tempered glass) has been evaluated with a total railing span of 72in with a Harmony 3in post attached at each end and secured to a concrete substrate with 4-Hilti KH-EZ 1/4in x 3in concrete anchors. When the guardrail is installed in configurations other than described in the installation instructions, the installation configuration and fastening detail must be specified by a licensed engineer.

When Harmony aluminum railing systems are assembled under the conditions described above, the railings meet the guardrail requirements of 1607.7.1.1 of the 2018 International Building Code (IBC).

When the Harmony guardrail is installed in configurations other than described above, each installation shall be designed using numerical calculation methods by a registered professional engineer licensed in the state in which the project is constructed. Sealed shop drawings shall be made available to interceded parties to demonstrate compliance with application in which the project is constructed.

If Harmony railings are installed contrary to the specific assembly described above and sealed engineering drawings are not available, then the railing is intended for decorative purposes only and cannot be used in applications where structural railing systems are required by local or international building code.

The diagrams and instructions provided with each system are for illustration purposes only and are not meant to replace a licensed professional. Any construction or use of the product must be in accordance with all local zoning and/or building codes. The consumer assumes all risks and liability associated with the construction or use of this product. The consumer or contractor should take all necessary steps to ensure the safety of everyone involved in the project, including, but not limited to, wearing the appropriate safety equipment. Except as contained in the written limited warranty, Harmony does not provide any other warranty; either expressed or implied, and shall not be liable for any damages, including consequential damages.

© 2022, 2023 Harmony Railing™ is a WES LLC Company
HarmonyRailing.com



Full Glass Panels with ADA Handrails



Drink Rail System on White Baluster Railing

HARMONY RAILING™

20-YEAR LIMITED WARRANTY

Harmony Railing™ warrants its railing products to be free from manufacturing defects in material and workmanship to the original consumer purchaser. In addition to manufacturing defects, this warranty covers cracking, peeling and blistering of the finish of our products.

This warranty does not cover damage caused by abnormal or improper use, improper product installation, accidents, alterations, welding, neglect, damage by lawn care equipment, abrasion, harsh chemicals, pool chemicals, snow and ice removal chemicals, air pollutants, improper service or lack of and damage caused by fire, flood or acts of God. This warranty does not cover corrosion from cuts, scratches, dents or nicks. Products with a residential installation located one (1) mile or less from any coastline shall have a three (3) year warranty from the date of purchase. Products located 1 mile or less from any coastline shall qualify for a 10-year Limited Warranty if an AkzoNobel Interpon 700 polyester epoxy primer (EL015Q) is applied prior to the application of the above Interpon D2000 Super Polyester Architectural Powder Coating (Ultralox Coastal Coating). AkzoNobel Interpon 700 polyester epoxy primer (EL015Q) powder coating shall only be applied by approved Interpon D applicators as per above instructions. Products in direct contact with saltwater do not qualify for any Ultralox Interlocking warranty.

REGISTER YOUR PRODUCT

We want to be sure you have the safety and security of knowing that your Harmony product is here to stay. To activate the warranty on your product, please complete the registration form online within sixty (60) days of your purchase date. Please visit: HarmonyRailing.com.

CLAIM PROCEDURE

To make a claim under this Warranty to receive replacement product, the original consumer must, within 90 days of actual or constructive notice of any covered defect in the product, do the following:

- (1) Prepare a letter that includes the following:
 - a. A list of the number of pieces and the size of each piece for which the claim is made.
 - b. Proof of Purchase of the products, as shown on the original invoice.
 - c. Proof of Warranty - Original purchaser or homeowner must have registered their product online at HarmonyRailing.com within 60 days of purchase date.
- (2) Mail the above to:
Harmony Railing
2737 West Service Road
Eagan, MN 55121
- (3) Email to: warranty@harmonyrailing.com



CONDITIONS AND EXCLUSIONS OF THIS WARRANTY:

CLEANING AND CARE INSTRUCTION MUST BE FOLLOWED TO HONOR WARRANTY.

THIS WARRANTY IS NOT TRANSFERABLE. THE AMOUNT OF YOUR RESTITUTION, IF ELIGIBLE, WILL NOT INCLUDE LABOR TO REMOVE THE EXISTING PRODUCT OR INSTALL ANY REPLACEMENT COMPONENTS, SHIPPING CHARGES, SALES TAX OR ANY OTHER CHARGES, NOR WILL HARMONY RAILING™ PROVIDE SUCH LABOR OR SERVICE.

THIS LIMITED WARRANTY IS IN LIEU OF ALL OTHER EXPRESS WARRANTIES. HARMONY RAILING™ MAKES NO OTHER EXPRESS WARRANTIES AND DOES NOT AUTHORIZE ANY OTHER PERSON OR AGENT TO MAKE ANY OTHER EXPRESS WARRANTIES. HARMONY RAILING™ NEITHER ASSUMES NOR AUTHORIZES ANY OTHER LIABILITY OR OBLIGATION IN WARRANTY, INCLUDING WITHOUT LIMITATION, THE IMPLIED WARRANTIES OF MERCHANTABILITY AND FITNESS FOR A PARTICULAR PURPOSE WITH RESPECT TO THEIR PRODUCTS. IN NO EVENT SHALL HARMONY RAILING™ BE LIABLE FOR ANY CONSEQUENTIAL, SPECIAL OR INCIDENTAL DAMAGES ARISING OUT OF OR CONNECTED WITH THE PURCHASE OR USE OF THEIR PRODUCTS OR FOR ANY BREACH OF WARRANTY.

SOME STATES DO NOT ALLOW LIMITATIONS ON HOW LONG AN IMPLIED WARRANTY LASTS OR THE EXCLUSION OR LIMITATION OF INCIDENTAL OR CONSEQUENTIAL DAMAGES, SO THE ABOVE LIMITATIONS OR EXCLUSIONS MAY NOT APPLY TO YOU. THIS WARRANTY GIVES YOU SPECIFIC LEGAL RIGHTS, AND YOU MAY HAVE OTHER RIGHTS THAT VARY FROM STATE TO STATE. THIS WARRANTY IS APPLICABLE ONLY TO SYSTEMS INSTALLED WITHIN THE CONTINENTAL UNITED STATES AND CANADA.

HARMONY RAILING™

CLEANING AND MAINTENANCE GUIDE

BACKGROUND

Harmony Railing™ architectural powder coatings are organic coatings that must be regularly cleaned and maintained in order to ensure the decorative and protective properties of the coatings are retained. Records of all cleaning schedules and frequencies shall be kept and maintained by the customer according to the process outlined below and shall be available to Harmony Railing™ upon request.

CLEANING METHOD

Usual maintenance of Products must adhere to the following steps:

- Clean using an appropriate cleaning product, as defined below.
- Rinse with clear water.
- Wipe with a soft cloth.
- All surfaces shall be cleaned using a soft cloth or sponge, and no cloth shall be harsher than natural bristle brushes.

If the Product is subject to any hazardous and unusual environmental factors or is located within one (1) mile of the seashore, an estuary or marine environment, Harmony Railing™ must be consulted on an individual project basis for best maintenance practices.

CLEANING PRODUCTS

Before cleaning, the customer must consult and adhere to the underlying instructions contained within the Product Data Sheet available online at HarmonyRailing.com.

Usual maintenance cleaning may be done using water with a mild detergent (pH 5 to 8).

If atmospheric pollution has resulted in heavy soiling of the coating, some stains or marks may require stronger domestic products, such as alcohol, petroleum spirits, white spirits or bleach diluted to five percent (5%). In this instance, the customer must rinse the coating immediately after using the cleaning product.

In no circumstance shall any abrasive cleaner, polish or cleaners containing ketones or ether be used.

FREQUENCY

For all Products located within one (1) mile of the seashore:

- Customer shall clean the Product six (6) times per year.
- The cleaning cycle shall commence within two (2) months of installation.
- Cleaning shall be conducted in intervals not to exceed two (2) months.
- Customer shall maintain fully documented records throughout the Warranty term.

For all Products located more than one (1) mile of the seashore:

- Customer shall clean the Product four (4) times per year.
- The cleaning cycle shall commence within three (3) months of installation.
- Cleaning shall be conducted in intervals not to exceed three (3) months.
- Customer shall maintain fully documented records throughout the Warranty term.

ADDITIONAL FACTORS

Damage from installation, mechanical processes, jig marks and other related defects must be repaired immediately in order for the Warranty to remain in effect.

Protective tapes used in installation must be a in low-tacking quality and must not be left in contact with the surface for more than one (1) month.

Harmony Railing™ must approve all sealants and mastics prior to installation in order for Warranty to remain in effect.

REQUEST A FREE ESTIMATE



Harmony Railing offers a FREE estimation service for your project.

Our team is ready to help you get all of the information you need including a full parts list, an official technical take off drawing and top customer service. Scan the code to request yours now!



**HARMONY
RAILING™**

HarmonyRailing.com

(844) 724-5001



©2023 Harmony Railing™. All Rights Reserved. Version 3.6
Part # MH39650