

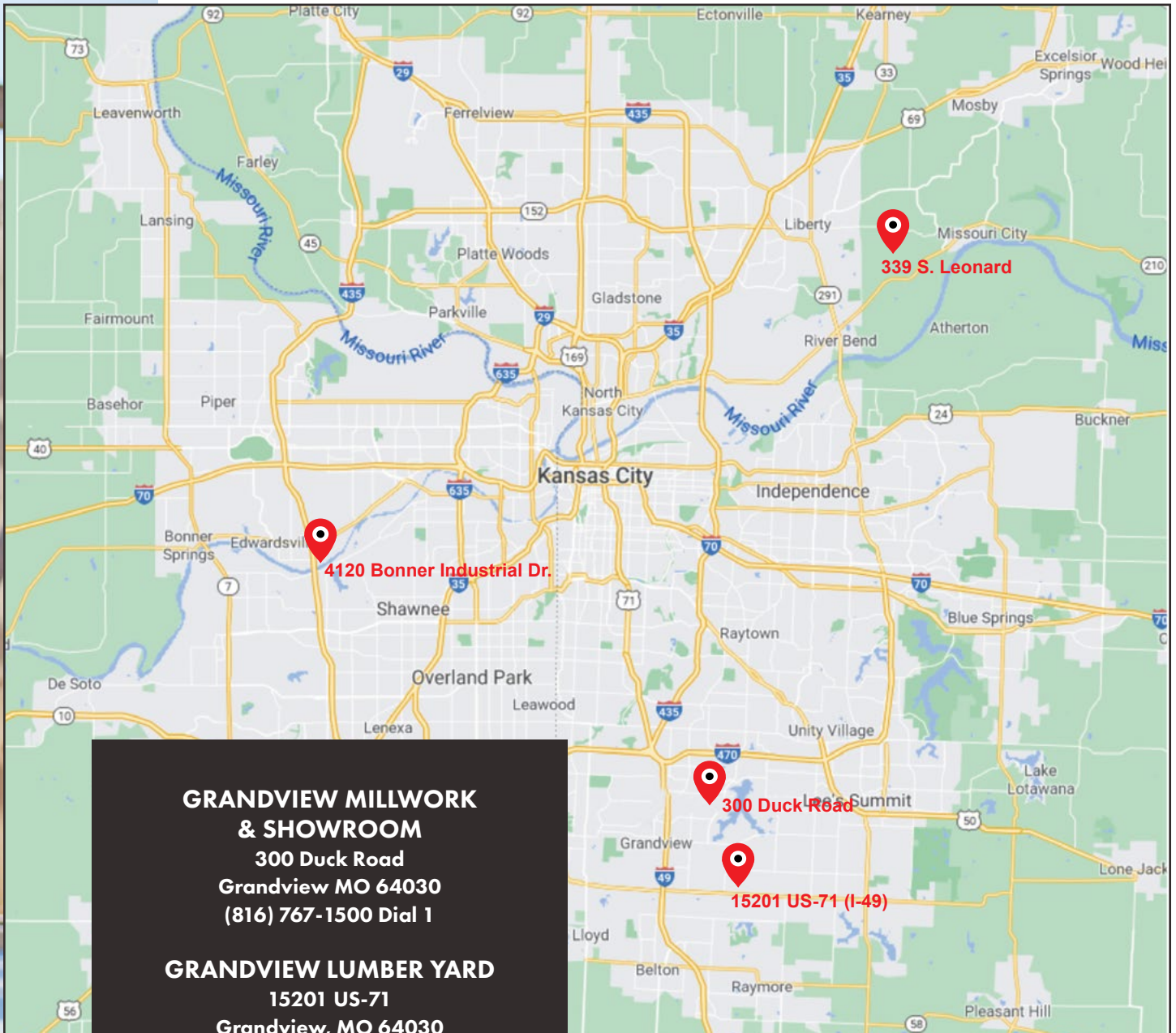


MEAD
LUMBER



**PRODUCT
CATALOG**

VISIT ONE OF OUR FOUR KANSAS CITY LOCATIONS



GRANDVIEW MILLWORK & SHOWROOM

300 Duck Road
Grandview MO 64030
(816) 767-1500 Dial 1

GRANDVIEW LUMBER YARD

15201 US-71
Grandview, MO 64030
(816) 767-1500 Dial 2

LIBERTY LUMBER YARD

339 S. Leonard
Liberty, MO 64068
(816) 767-1500 Dial 3

BONNER SPRINGS LUMBER YARD

4120 Bonner Industrial Drive
Shawnee, KS 66226
(816) 767-1500 Dial 4



meadlumber.com



Table of Contents

Exterior Doors	4-6
Stock Interior Doors	13-15
Baseboards	16
Base Shoe & Caps, Panel Moulds, Stops, Chair Rail	17
Casings	18
Crowns/Coves	19-20
Shiplaps, Outside Corners, Jambs, T&G Paneling	21
Flat Stock	22
Stairway Anatomy	23-24
Handrails	25
Stock Newels	26
Stock Iron Balusters.....	27-28
Stock Balusters	29
Hardware - Schlage Locks.....	30
Hardware - Kwikset Locks.....	31
Resources.....	32

Welcome to Mead Lumber

Specializing in supplying lumber, trusses, windows, millwork, hardware, interior and exterior doors to residential and light commercial new construction in the Kansas City Metro area.

Making You Feel At Home, From Design To Finish®





EXTERIOR DOORS

FIBERGLASS

SIDELIGHT OPTIONS



3/4 - Light Fiber-Classic® Oak

- 2/8 6'8"
- 2/8 8'0"
- 3/0 6'8"
- 3/0 8'0"



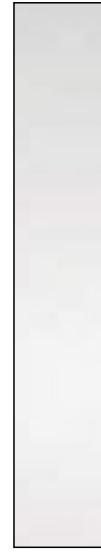
S880SL Low-E Sidelight

1/0 8'0"



S100SL Low-E Sidelight

1/0 6'8"



Clear DSSL Sidelight

1/0 6'8"
1/0 8'0"



5-LT White DSSL Sidelight

1/0 6'8"



EXTERIOR DOORS

SMOOTH FIBERGLASS



S90

2/8 6'8"
2/8 8'0"
3/0 6'8"
3/0 8'0"

* SDL options available



S200

3/0 6'8"



S205

3/0 6'8"



S210

2/6 6'8"
2/8 6'8"
3/0 6'8"



S220

3/0 6'8"



CCV050

3/0 6'8"



S8120

3/0 8'0"



S1100

3/0 6'8"

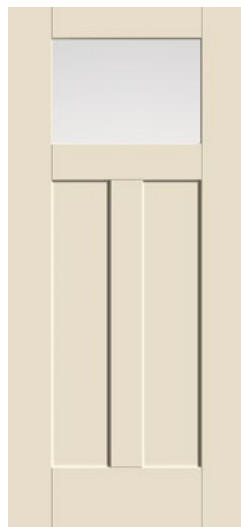
* 3-1/2" and
5-1/2" SDL
options available



S4800

3/0 6'8"
3/0 8'0"

* Clear Low-E insert
available



S4810-LE
Flush Glazed

3/0 6'8"

* SDL options
available



S118 Low-E

2/6 6'8"
2/8 6'8"
3/0 6'8"

* Blinds option
available on 6'8"



S2000
Flush Glazed

2/8 6'8"
2/8 8'0"
3/0 6'8"
3/0 8'0"

* 3-1/2" and
5-1/2" SDL
options available



* 4 Block Dentil Shelf available for
S4800 and S4810-LE

EXTERIOR DOORS

EXTERIOR DOOR ROUGH OPENING CHART

6'-8" DOOR HEIGHT

Sizes and Rough Openings

Description	Size	Actual Unit Size	Rough Opening
Single Door Unit	2'-6"	31-1/2"x81-5/8"	32-1/4"x82-1/8"
(Inswing)	2'-8"	33-1/2"x81-5/8"	34-1/4"x82-1/8"
	2'-10"	35-1/2"x81-5/8"	36-1/4"x82-1/8"
	3'-0"	37-1/2"x81-5/8"	38-1/4"x82-1/8"
	3'-6"	43-1/2"x81-5/8"	44-1/4"x82-1/8"
Double Door Unit	5'-0"	62-3/8"x81-5/8"	63-1/8"x82-1/8"
	5'-4"	66-3/8"x81-5/8"	67-1/8"x82-1/8"
	6'-0"	74-3/8"x81-5/8"	75-1/8"x82-1/8"

8'-0" DOOR HEIGHT

Sizes and Rough Openings

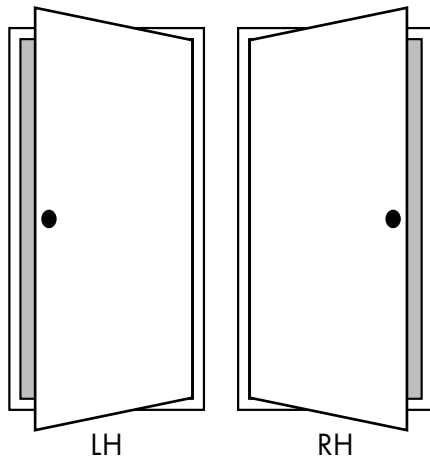
Description	Size	Actual Unit Size	Rough Opening
Single Door Unit	2'-6"	31-1/2"x97-5/8"	32-1/4"x98-1/8"
(Inswing)	2'-8"	33-1/2"x97-5/8"	34-1/4"x98-1/8"
	2'-10"	35-1/2"x97-5/8"	36-1/4"x98-1/8"
	3'-0"	37-1/2"x97-5/8"	38-1/4"x98-1/8"
	3'-6"	43-1/2"x97-5/8"	44-1/4"x98-1/8"
Double Door Unit	5'-0"	62-3/8"x97-5/8"	63-1/8"x98-1/8"
	5'-4"	66-3/8"x97-5/8"	67-1/8"x98-1/8"
	6'-0"	74-3/8"x97-5/8"	75-1/8"x98-1/8"

Continuous Sill Systems

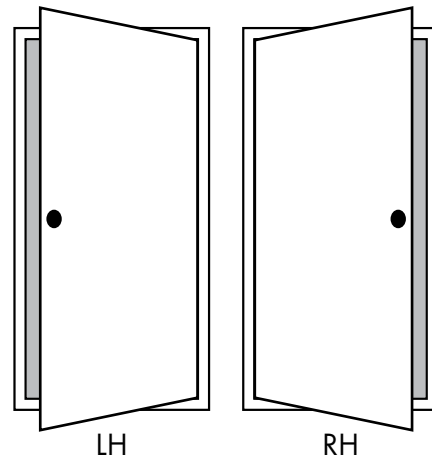
Description	Size	Actual Unit Size	Rough Opening
w/(1) 12" Sdlit	3'-0"	51"x81-5/8"	51-3/4"x82-1/8"
w/(2) 12" Sdlit	3'-0"	64-1/2"x81-5/8"	65-1/4"x82-1/8"
w/(1) 14" Sdlit	3'-0"	53"x81-5/8"	53-3/4"x82-1/8"
w/(2) 14" Sdlit	3'-0"	68-1/2"x81-5/8"	69-1/4"x82-1/8"
Note: Outswing height			
w/(1) 12" Sdlit	3'-0"	51"x81"	51-3/4"x81-1/2"
w/(2) 12" Sdlit	3'-0"	64-1/2"x81"	65-1/4"x81-1/2"
w/(1) 14" Sdlit	3'-0"	53"x81"	53-3/4"x81-1/2"
w/(2) 14" Sdlit	3'-0"	68-1/2"x81"	69-1/4"x81-1/2"

Continuous Sill Systems

Description	Size	Actual Unit Size	Rough Opening
w/(1) 12" Sdlit	3'-0"	51"x97-5/8"	51-3/4"x98-1/8"
w/(2) 12" Sdlit	3'-0"	64-1/2"x97-5/8"	65-1/4"x98-1/8"
w/(1) 14" Sdlit	3'-0"	53"x97-5/8"	53-3/4"x98-1/8"
w/(2) 14" Sdlit	3'-0"	68-1/2"x97-5/8"	69-1/4"x98-1/8"
Note: Outswing height			
w/(1) 12" Sdlit	3'-0"	51"x97"	51-3/4"x97"
w/(2) 12" Sdlit	3'-0"	64-1/2"x97"	65-1/4"x97"
w/(1) 14" Sdlit	3'-0"	53"x97"	53-3/4"x97"
w/(2) 14" Sdlit	3'-0"	68-1/2"x97"	69-1/4"x97"



Outswing
(View from Outside Home)



Inswing
(View from Inside Home)



Signature Doors

Stylish homeowner favorites
for the past two decades

Including 10 of our most-beloved door styles, our Signature Doors include many of our bestselling collections. Our Signature doors boast historic inspiration, impressive ironwork, screened panels, and more, with a huge variety of configurations to suit any entry. These featured doors have many styling choices, accessory options, and sizing capabilities included, so you can select a custom look for your home.





Fifty standard exterior colors, seven anodized finishes and custom colors

Ten distinctive wood species, eleven interior finishes and custom interiors

Extensive hardware selection, grilles, between-the-glass art glass or patterned glass



Choose from over 50 exterior colors with the Andersen Architectural Collection E-Series!

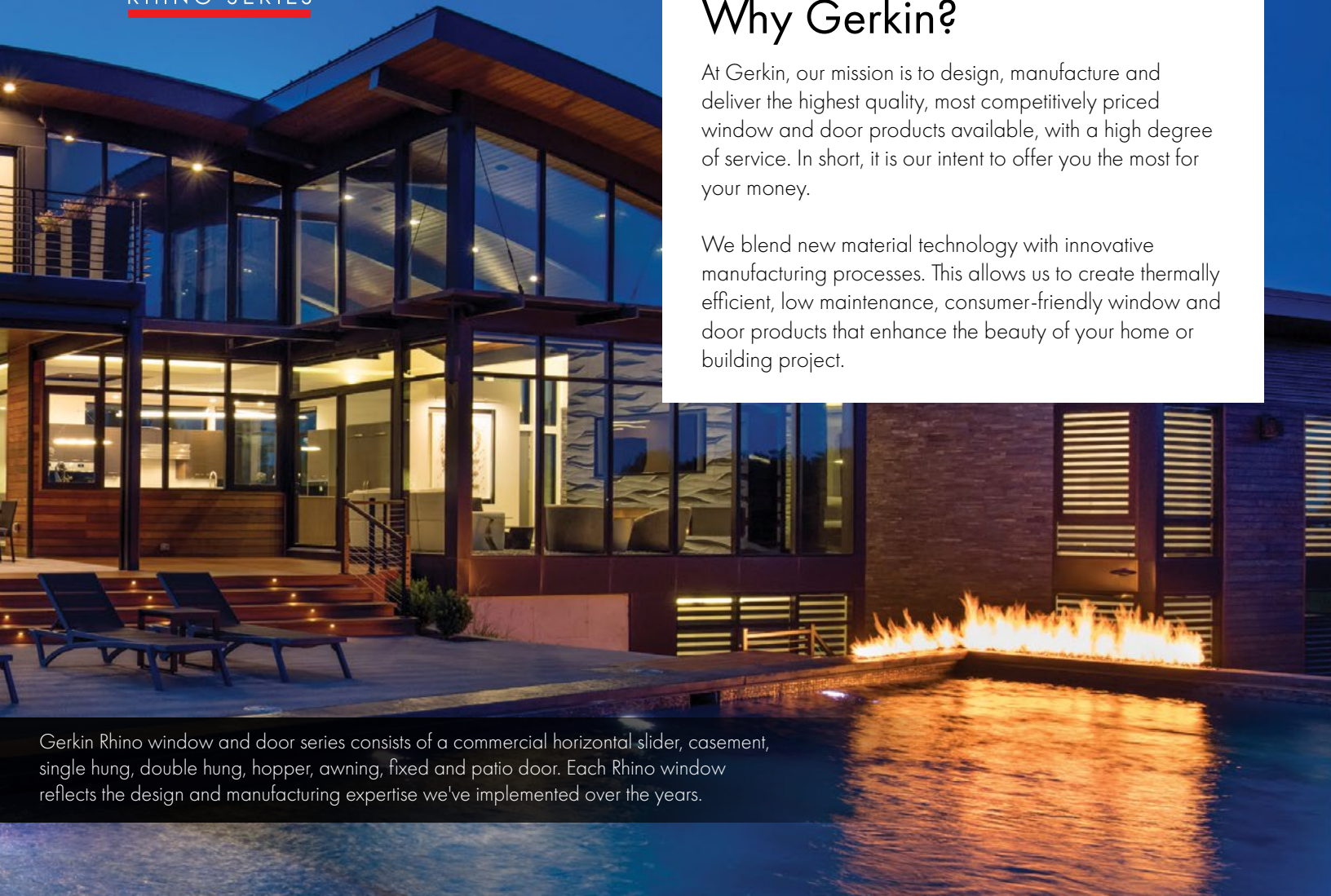





Why Gerkin?

At Gerkin, our mission is to design, manufacture and deliver the highest quality, most competitively priced window and door products available, with a high degree of service. In short, it is our intent to offer you the most for your money.

We blend new material technology with innovative manufacturing processes. This allows us to create thermally efficient, low maintenance, consumer-friendly window and door products that enhance the beauty of your home or building project.



Gerkin Rhino window and door series consists of a commercial horizontal slider, casement, single hung, double hung, hopper, awning, fixed and patio door. Each Rhino window reflects the design and manufacturing expertise we've implemented over the years.



Comfort Series Vinyl windows and doors are designed to meet the demands of the 21st century for the new construction and replacement markets. The foundation for all of our products and our success as a company is based on high quality maintenance free products, fair pricing, and service after the sale.



Luxury Aluminum Windows & Doors

Traditional Wood Clad Windows & Doors

Contemporary Vinyl Windows & Doors



Quaker's series of windows for new construction are made with design in mind. When building a new home or performing extensive remodeling, your choices are many. Based on your architectural vision, Quaker fabricates to the exact size and combination that you request. Custom mulling options are also available.



Vector's uncompromising commitment to builders informs their unparalleled service and exceptional craftsmanship. With Vector, you'll find quality windows and doors that help builders achieve better results with quick delivery times, personalized service and minimal call backs.



STOCK INTERIOR DOORS

1-3/8" 6/8 HOLLOW CORE DOORS - FLAT PANEL



Aberdeen Smooth



Mercer Smooth
*Also available in 8/0



Whitman Smooth



Winthrop Smooth



Yarrow Smooth

STOCK INTERIOR DOORS

1-3/8" 6/8 HOLLOW CORE DOORS - RAISED PANEL



Riverside Raised Smooth



Columbia
6 Panel Smooth



2 Panel Square Top
*Also available in 8/0



Cheyenne Smooth

BARN DOORS



Roman Smooth



SL-10-V-ZBAR
3070 & 3670



STOCK INTERIOR DOORS

6/8 PINE DOORS



1-Lite Clear

2/0, 2/4, 2/6, 2/8 & 3/0



1-Lite Frosted

2/0, 2/4 & 2/6



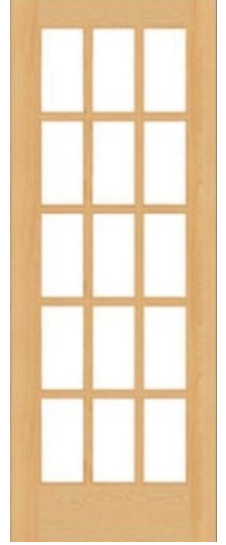
9-Lite

2/6 & 2/8



10-Lite

2/0 & 2/4



15-Lite

2/6, 2/8 & 3/0



MOULDING AND TRIM

BASEBOARDS



634

$\frac{3}{8}$ " x 3" x 16'

620

$\frac{9}{16}$ " x 4 $\frac{1}{4}$ " x 16'

RAW FJ, PRIMED FJ



430

$\frac{13}{32}$ " x 4 $\frac{1}{4}$ " x 16'

RAW FJ, PRIMED FJ



432

$\frac{13}{32}$ " x 5 $\frac{1}{4}$ " x 16'

RAW FJ, FLEX, PRIMED FJ



430XL

$\frac{1}{2}$ " x 7 $\frac{1}{4}$ " x 16'

PRIMED MDF



9290

$\frac{9}{16}$ " x 5" x 16'

PRIMED MDF



658

$\frac{9}{16}$ " x 5 $\frac{1}{4}$ " x 16'

RAW FJ, FLEX, PRIMED FJ



422

$\frac{9}{16}$ " x 5 $\frac{1}{4}$ " x 16'

RAW FJ, FLEX, PRIMED FJ



647

$\frac{9}{16}$ " x 5 $\frac{1}{4}$ " x 16'

RAW FJ, FLEX

MOULDING AND TRIM

CASINGS



347

$\frac{5}{8}$ " x 2 $\frac{1}{4}$ " x 14'
RAW FJ, FLEX



356

$\frac{5}{8}$ " x 2 $\frac{1}{4}$ " x 14'
RAW FJ, PRIMED FJ PINE,
PINE, FLEX



453

$\frac{17}{32}$ " x 2 $\frac{1}{4}$ " x 14'
RAW FJ, PRIMED



444

$\frac{11}{16}$ " x 3 $\frac{1}{4}$ " x 16'
RAW FJ, PRIMED FJ PINE, FLEX



447

$\frac{11}{16}$ " x 3 $\frac{1}{4}$ " x 16'
RAW FJ



413

$\frac{11}{16}$ " x 3 $\frac{1}{4}$ " x 16'
RAW FJ, PRIMED



421

$\frac{11}{16}$ " x 3 $\frac{1}{4}$ " x 16'
RAW FJ, FLEX



METRIE

MOULDING AND TRIM

BASE SHOE & CAPS



126

$1/2" \times 3/4" \times 8-16'$

PINE, PRIMED FJ PINE, BIRCH,
POPLAR, RED OAK, WHITE OAK



128

$7/16" \times 3/4" \times 8-16'$

PINE, PRIMED FJ PINE, WHITE OAK



167

$3/4" \times 1" \times 8-16'$

POPLAR, MAPLE, PINE, FLEX,
WHITE OAK, KNOTTY ALDER,
PRIMED

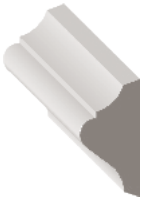


163

$11/16" \times 1 3/8" \times 8-16'$

PINE, BIRCH, FLEX

PANEL MOULDS



183

$9/16" \times 1 1/8" \times 8-16'$

PINE, RAW FJ, BIRCH,
POPLAR



182

$11/16" \times 1 5/8" \times 8-16'$

PINE, RAW FJ



254

$1/2" \times 3/4" \times 8-16'$

PINE



876

$7/16" \times 1 3/8" \times 7-16'$

PINE, POPLAR

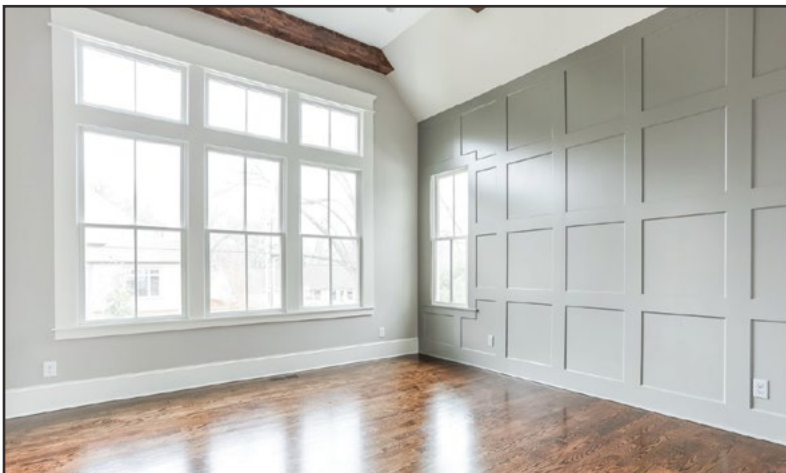


936

$7/16" \times 1 3/8" \times 7-16'$

PINE

CHAIR RAIL



390

$11/16" \times 2 5/8" \times 8-16'$

PINE

MOULDING AND TRIM

CROWNS/COVES



85

$\frac{9}{16}$ " x $1\frac{3}{4}$ " x 8-16'

84

$\frac{9}{16}$ " x $2\frac{1}{4}$ " x 8-16'

PINE



52

$\frac{9}{16}$ " x $2\frac{3}{4}$ " x 8-16'

PINE



51

$\frac{1}{2}$ " x $3\frac{1}{4}$ " x 16'

PRIMED FJ PINE, RAW FJ,
BIRCH, PINE



81

$\frac{9}{16}$ " x $3\frac{1}{4}$ " x 16'

RAW FJ, PINE



88

$\frac{11}{16}$ " x $4\frac{1}{4}$ " x 16'

RAW FJ, PINE



314CFT

$\frac{1}{2}$ " x $3\frac{1}{4}$ " x 16'

414CFT

$\frac{17}{32}$ " x $4\frac{1}{4}$ " x 16'

RAW FJ



2003

$\frac{25}{32}$ " x $3\frac{3}{8}$ " x 16'

RAW FJ, POPLAR



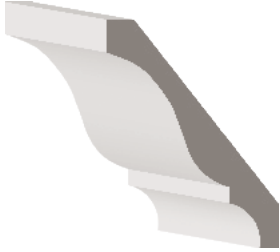
2004

$\frac{11}{16}$ " x $4\frac{3}{4}$ " x 16'

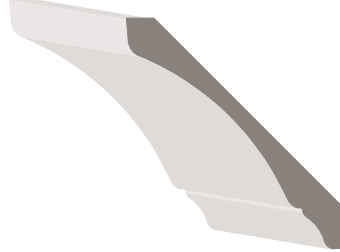
POPLAR

MOULDING AND TRIM

CROWNS/COVES



48
 $\frac{9}{16}'' \times 4 \frac{1}{4}'' \times 16'$
 RAW FJ, PINE, BIRCH, FLEX



PB414
 $\frac{17}{32}'' \times 4 \frac{1}{4}'' \times 16'$
 POPLAR



46
 $\frac{9}{16}'' \times 5 \frac{3}{16}'' \times 16'$
 PINE

INSIDE CORNERS

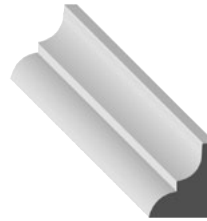


93
 $\frac{3}{4}'' \times \frac{3}{4}'' \times 8-16'$
 PINE, BIRCH, POPLAR,
 RED OAK, WHITE OAK

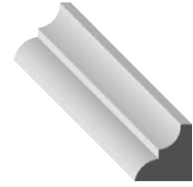


94
 $\frac{11}{16}'' \times 1 \frac{1}{8}'' \times 8-16'$
 PINE

GLASS BEADS



147
 $\frac{9}{16}'' \times \frac{1}{2}''$
 PINE

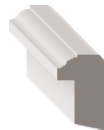


148
 $\frac{3}{8}'' \times \frac{3}{8}''$
 PINE

BACKBANDS



280
 $\frac{21}{32}'' \times 1 \frac{1}{32}'' \times 8-16'$
 PINE, FLEX



281
 $\frac{21}{32}'' \times 1 \frac{3}{32}'' \times 8-16'$
 PINE

QUARTER ROUND & CLOSET ROUND



105
 $\frac{3}{4}'' \times \frac{3}{4}'' \times 8-16'$

110
 $\frac{1}{4}'' \times \frac{1}{4}'' \times 8-16'$
 PINE



233
 $1 \frac{5}{16}'' \times 1 \frac{5}{16}'' \times 8-16'$
 PINE

MOULDING AND TRIM

SHIPLAPS



399188

$\frac{3}{4}'' \times 7 \frac{1}{4}'' \times 16'$
MDF/ULTRALITE



16FJPSHIPLAP

$\frac{9}{16}'' \times 5 \frac{3}{8}'' \times 16'$
PRIMED FJ PINE

T & G PANELING



561601

$\frac{5}{8}'' \times 5 \frac{5}{16}'' \times 10-16'$
KNOTTY PINE



16PTG

$\frac{1}{2}'' \times 5 \frac{1}{2}'' \times 16'$
PRIMED FJ PINE

JAMBS



62045

$1 \frac{11}{16}'' \times 5 \frac{1}{8}'' \times 81 \frac{11}{16}''$
RAW FJ, PINE



4916

$\frac{11}{16}'' \times 4 \frac{9}{16}'' \times 81 \frac{11}{16}''$

62010

$\frac{11}{16}'' \times 4 \frac{9}{16}'' \times 17'$

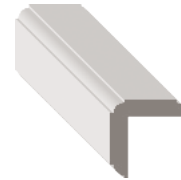
62041

$\frac{11}{16}'' \times 6 \frac{9}{16}'' \times 81 \frac{11}{16}''$

$\frac{11}{16}'' \times 6 \frac{9}{16}'' \times 17'$

RAW FJ

OUTSIDE CORNER



202

$1 \frac{1}{8}'' \times 1 \frac{1}{8}'' \times 8-16'$
PINE, RED OAK, WHITE OAK,
MAPLE



205

$1 \frac{1}{8}'' \times 1 \frac{1}{8}'' \times 8-16'$
PINE, MAPLE



206

$\frac{3}{4}'' \times \frac{3}{4}'' \times 8-16'$
PINE

FLAT STOCK

SHELVING, STAIR TREADS, DIMENSIONAL LUMBER, PLYWOOD

PARTICLE BOARD SHELVING	
	12'
12"	x
16"	x
24"	x

STAIR TREADS	
	12'
12"	x

STOCK DIMENSIONAL LUMBER			
Length	Size	Grade	Misc.
Poplar			
random	1x4,1x6,1x8,1x12		S4S
Radiata Pine			
random	1x4,1x6,1x8,1X12	C select	S4S
FJ Pine			
16'	1x2,1x4,1x6,1x8,1X12	FJ Pine	S4S
Ponderosa Pine			
16'	1x4,1x6,1x8,1X12	#2	S4S
White Oak			
random	1x4,1x6,1x8,1X12		S4S
Soft Maple			
random	1x4,1x6,1x8,1X12		S4S
Clear Superior Alder			
random	1x4, 1x8		

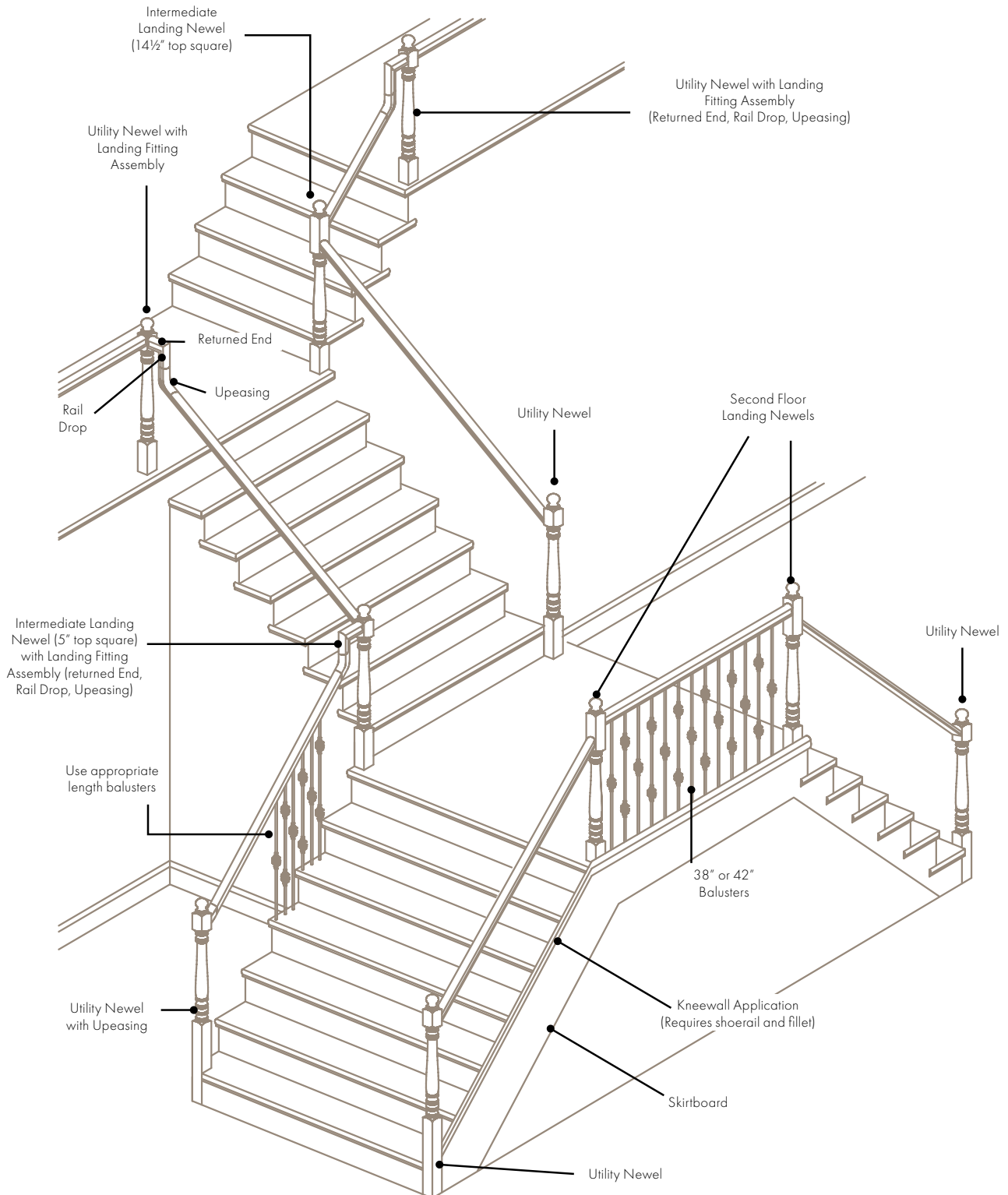
INTERIOR JAMB STOCK	
WIDTH	LENGTH
Finger Joint - Raw	
4-9/16"	R/L 6/8 Legs
6-9/16"	R/L 6/8 Legs
Finger Joint - Primed	
4-9/16"	6/8 Legs & 8/0 Legs
6-9/16"	6/8 Legs & 8/0 Legs
Clear Pine	
4-9/16"	R/L
6-9/16"	6/8 Legs Only

RAW MDF	
	16'
4"	x
6"	x
8"	x
12"	x

STOCK PLYWOOD/PANELS					
Thickness	Size	Grade	Core	Veneer	Misc.
Birch					
1/4"	4x8	A3	Domestic	rotary	WPF
1/4"	4x8	B2	Domestic	rotary	WPF
1/2"	4x8	A2	Domestic	rotary	WPF
1/2"	4x8	B2	Domestic	rotary	WPF
3/4"	4x8	B2	Domestic	rotary	WPF
3/4"	4x10	B2	Domestic	rotary	WPF
18mm (3/4")	4x8	D2	Import	rotary	WPF
Clear Alder					
3/4"	4x8	B2	Domestic	rotary	WPF
White Oak					
1/2"	4x8	B2	Domestic	rotary	WPF
3/4"	4x8	B2	Domestic	rotary	WPF
MDF					
1/4"	4x8				
1/2"	4x8				
3/4"	4x8				
11/16"	4x10				
Beaded PLY					
3/16"	4x8		MDF	Primed	2" oc primed
3/8"	4x8		VC	Pine	2" oc
Bedford Village Birch Beadboard					
5/32"	4x8				1-1/2" oc

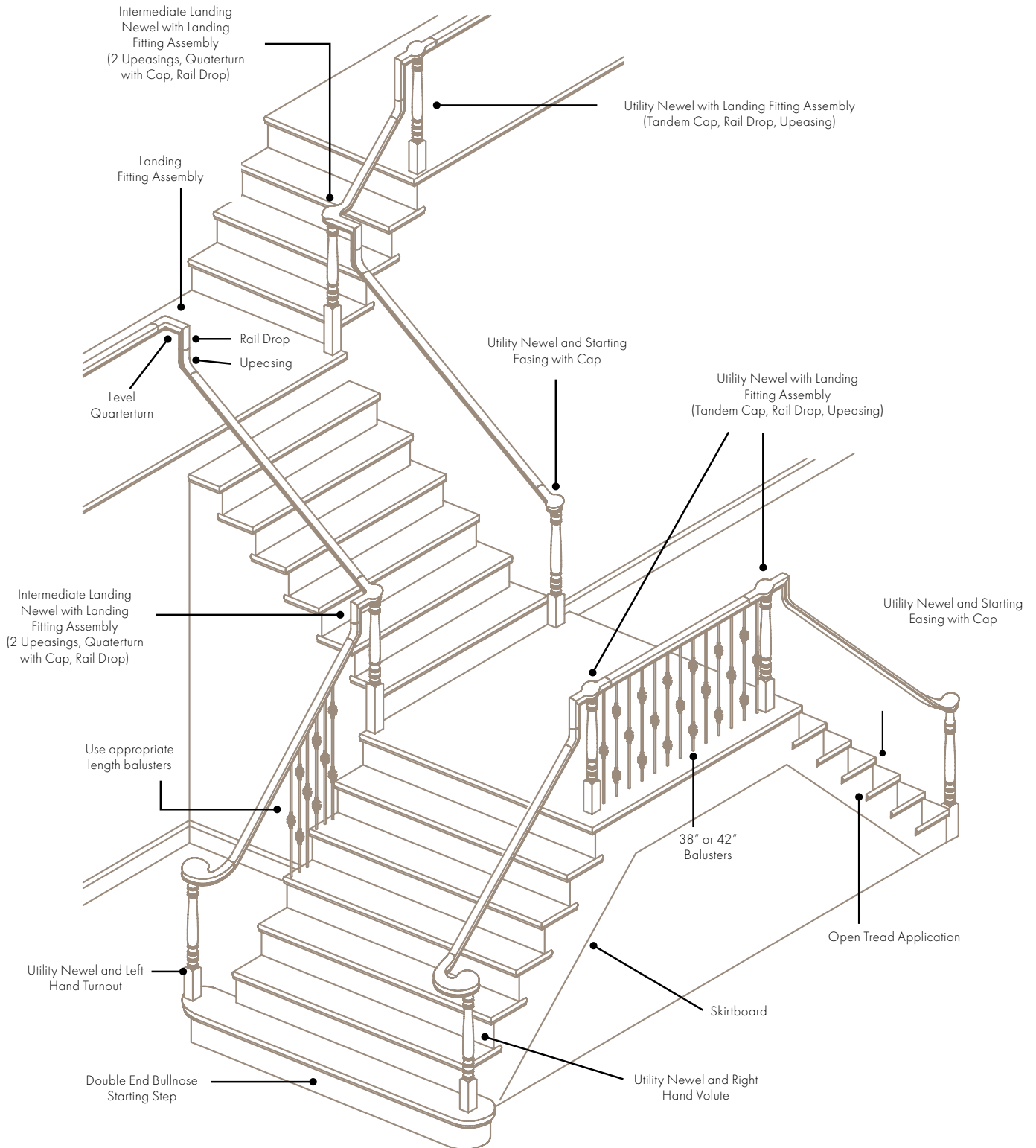
STAIRWAY ANATOMY

POST TO POST STAIRWAY ANATOMY



STAIRWAY ANATOMY

OVER THE POST STAIRWAY ANATOMY



HANDRAILS



6010 Non-Plowed

2 1/4" x 2 3/8" x 12'/16'
MAPLE, POPLAR, RED OAK, WHITE OAK



6010 Plowed

2 5/8" x 2 3/8" x 12'/16'
MAPLE, POPLAR



6010 Bending Rail

2 1/4" x 2 3/8" x 12'/16'
MAPLE



6210 Non-Plowed

2 5/8" x 2 3/8" x 12'/16'
MAPLE



6210 Plowed

2 5/8" x 2 3/8" x 12'/16'
MAPLE, RED OAK



6840 Non-Plowed

2 1/2" x 1 5/8" x 12'/16'
MAPLE, WHITE OAK



6840 Plowed

2 1/2" x 1 5/8" x 12'/16'
MAPLE



Dawn Conners



6840 Bending Rail

2 1/2" x 1 5/8" x 12'/16'
MAPLE



231

1 7/16" x 1 5/8" x 16'
PINE

Coffman
STAIR PARTS

STOCK NEWELS

OVER THE POST



4015
3" x 44"
MAPLE

POST TO POST



4005
3 1/2" x 56"
MAPLE, RED OAK



4076
3 1/2" x 56"
WHITE OAK, POPLAR



4042
3" x 52"
MAPLE, RED OAK



4045
3" x 59"
MAPLE

TREAD CAPS



8071
Tread Cap with Mitered Return
Nosing and Cove (L or R)
MAPLE, RED OAK



8879
Square Nose
False Tread & Riser
MAPLE, WHITE OAK

BOX NEWELS



4075
3" x 66"
MAPLE, POPLAR



4091
5 1/2" x 54"
MAPLE, POPLAR



4376
3 1/2" x 56"
MAPLE,
WHITE OAK

IRON NEWEL & SHOES



2360
Square Newel
Mounting Kit with
Traditional Shoe
SATIN BLACK



2360SLP
Square Newel
Mounting Kit with
Low Profile Shoe
SATIN BLACK



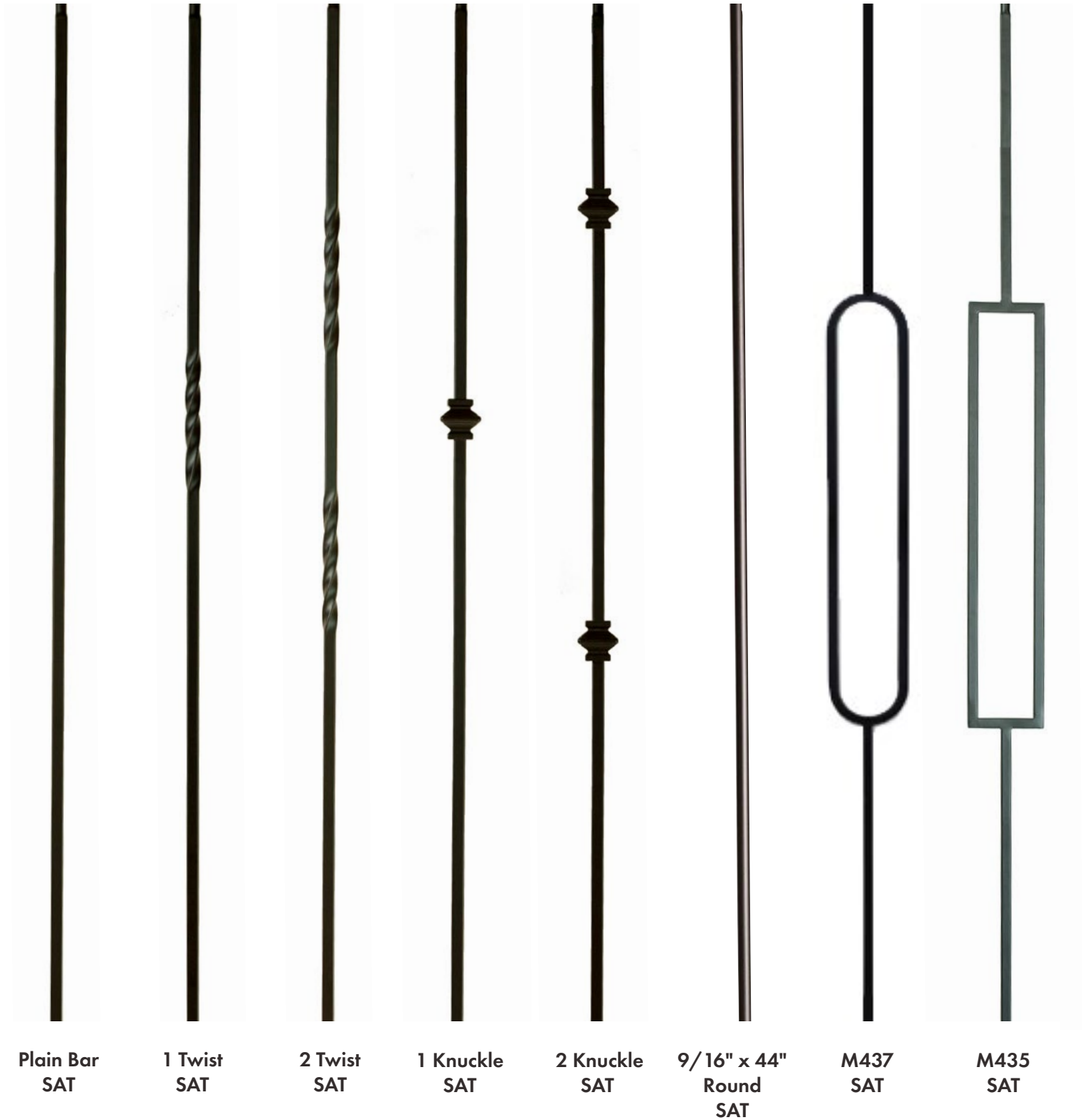
2455
1 3/16" x 48"
SATIN BLACK

STOCK IRON BALUSTERS



STOCK IRON BALUSTERS

IN STOCK IRON BALUSTER FINISH: SATIN BLACK



SAT (Satin Black)

STOCK BALUSTERS



M-06
1/2" Tall Shoe
with Screw
SAT



AK-01
1/2" Adjustable
Knuckle
SAT



PSH-02
1/2" Pitch Shoe
SAT



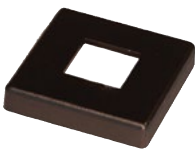
H-03
9/16" Flat Shoe
SAT



H-06
9/16" Tall Shoe
with Screw
SAT



H-05P
9/16" Pitch Shoe
SAT



PF-06
1/2" Low Profile Flat Shoe
SAT



5/8" x 96"
Horizontal Tube
SAT



5060-PR
1 1/4" Primed,
36" or 42"



5360-PR
1 3/4" Primed,
36" or 42"

SAT (Satin Black)

SCHLAGE & THERMA-TRU LOCKS

HANDLESETS



Century
619



Century
622



Barcelona
619



Barcelona
622



Plymouth
619



Plymouth
622



Millennium Narrow Multi-Point
Active and Dummy Handlesets
Black

THERMA-TRU[®]
DOORS

KNOBS



Dexter Stratus 619



Dexter Stratus 622



Plymouth 619



Plymouth 622

LEVERS



Solstice 619



Solstice 622



Latitude 622

FINISHES



619 – Satin Nickel



622 – Matte Black



KWIKSET LOCKS

HANDLESETS

San Clemente



Satin Nickel

Venetian Bronze

Matte Black

Vancouver



Satin Nickel

Venetian Bronze

Matte Black

KNOBS

Hancock



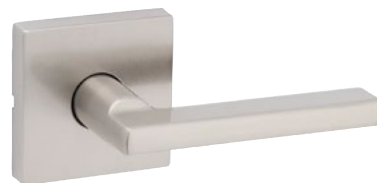
Satin Nickel

Venetian Bronze

Matte Black

LEVERS

Halifax



Satin Nickel



Venetian Bronze



Matte Black

Kwikset

RESOURCES

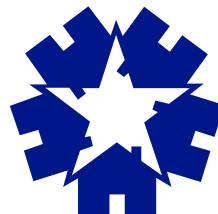


METRIE



VECTOR
WINDOWS SINCE 1995

MEMBER OF



HOME BUILDERS
ASSOCIATION
OF GREATER KANSAS CITY

ONE YEAR LIMITED WARRANTY

Mead Lumber guarantees and warrants, subject to the conditions and restrictions stated below, that the products, and component parts thereof, purchased from a Mead Lumber millwork facility shall be free from any defects in materials and workmanship for one (1) year from the original date of purchase. Should any such product or component part be proven to be defective during this one (1) year period, Mead Lumber shall, at Mead Lumber's sole option, either 1) repair any such product without charge; 2) furnish a replacement product or component, without charge, and ship freight prepaid to the person making the warranty claim; or 3) refund the original purchase price of the defective product or component. IN NO EVENT SHALL Mead Lumber PAY FOR THE COST OF LABOR, INSTALLATION OR FINISHING OF EITHER THE ORIGINAL OR REPLACEMENT PRODUCT OR ANY REPLACEMENT PART, OR FOR ANY OTHER INCIDENTAL COSTS RELATED THERETO.

This warranty is valid only when products covered by this warranty are installed, finished and maintained according to Mead Lumber's and the manufacturer's written finishing and/or installation instructions. This warranty does not cover 1) products or component parts which have been damaged by abnormal use or stress, 2) products or component parts which have been subjected to negligent operation, 3) damage to screen or glass, 4) damage resulting from improper installation, or 5) damage caused by fire, flood, earthquake, storm, tornado, or other acts of nature or any other cause beyond the control of Mead Lumber.

THIS WARRANTY IS EXCLUSIVE AND IS GIVEN AND ACCEPTED IN LIEU OF ANY AND ALL OTHER WARRANTIES EXPRESSED OR IMPLIED, INCLUDING WITHOUT LIMITATION, ANY IMPLIED WARRANTY OF MERCHANTABILITY OR FITNESS FOR A PARTICULAR PURPOSE AND ALL OTHER REMEDIES, THESE ARE THE ONLY REMEDIES OF BUYER FOR ANY BREACH OF WARRANTY OR ANY OTHER CLAIM. Mead Lumber'S TOTAL LIABILITY ARISING OUT OF THE SUPPLYING OF THE PRODUCTS AND COMPONENTS WHETHER ON WARRANTIES OR CLAIM OF NEGLIGENCE, OR OTHERWISE, SHALL NOT IN ANY CASE EXCEED THE COST PAID BY THE BUYER TO Mead Lumber FOR THE PRODUCTS AND COMPONENTS AND IN NO CASE SHALL Mead Lumber BE LIABLE TO BUYER OR ANY THIRD PARTY FOR ANY INCIDENTAL, CONSEQUENTIAL OR SPECIAL DAMAGES. EXCEPT AS EXPRESSLY CONTAINED HEREIN WITH RESPECT TO PRODUCTS IT SELLS IN THE EVENT STATE LAW PRECLUDES EXCLUSION OR LIMITATION OF IMPLIED WARRANTIES, THE DURATION OF ANY SUCH WARRANTY AND THE TIME AND MANNER OF PRESENTING ANY CLAIM THEREON SHALL BE THE SAME AS THAT PROVIDED IN THIS LIMITED WARRANTY.

Claims under this warranty must be made in writing prior to the expiration of the one (1) year warranty period and prior to the beginning of any repair work by your local Mead Lumber millwork division that supplies the product or component part. Written claims must detail the original date of purchase, nature of the problem and the name, address and telephone number of the person making the warranty claim. No warranty claim shall be considered properly made unless it contains the foregoing in writing and is received by Mead Lumber prior to the expiration of the one (1) year warranty period. Mead Lumber reserves the right to have any of its products, alleged to be defective, field inspected by a Mead Lumber representative. No contractor, dealer, or representative of Mead Lumber has the authority to change or modify this warranty, either orally or in writing, in any respect.

WARNING: Products sold by Mead Lumber may contain components manufactured with urea formaldehyde resin and, if so, will release small quantities of formaldehyde. Formaldehyde levels in the indoor air can cause temporary eye and respiratory conditions or allergies. Ventilation will reduce indoor formaldehyde levels. To the best of Mead Lumber's knowledge, all Mead Lumber products are in compliance with any applicable state and general requirements relating to safety levels for urea formaldehyde emissions.

This limited warranty is effective for all products sold by Mead Lumber millwork divisions after October 1, 2007, and all previous warranties shall be considered null and void as to such products.

SPECIFICATIONS

Measurements shown for certain items are descriptive only and there may be variations in size in certain items because of industry wide or local trade practices and variations among suppliers. In the event that an exact size is needed to meet a specification, you should contact your local Mead Lumber representative to be sure the item will meet such specification.

PRODUCT MODIFICATIONS

We reserve the right to make changes, without notice, in materials and specifications or to discontinue any item or items.



OUR LOCATIONS

Colorado

Cañon City
Sterling

Iowa

Ames
Des Moines

Kansas

Bonner Springs
Dodge City
Hays (2)
Liberal
Manhattan
Pratt
Russell
Salina
Stockton

Missouri

Grandview (2)
Liberty

Montana

Billings (2)
Butte
Laurel
Red Lodge

Nebraska

Beatrice
Broken Bow
Columbus (2)
Cozad
Grand Island (4)
Kearney
Lexington
Lincoln
McCook
Nebraska City
Norfolk
North Platte
Ogallala
Omaha
York

Oklahoma

Ada
Guthrie (2)

South Dakota

Rapid City (5)
Sioux Falls (2)
Spearfish
Winner
Yankton

Wyoming

Cheyenne (2)
Gillette
Sheridan (2)





**GRANDVIEW MILLWORK
& SHOWROOM**

300 Duck Road
Grandview MO 64030
(816) 767-1500 Dial 1

GRANDVIEW LUMBER YARD

15201 US-71
Grandview, MO 64030
(816) 767-1500 Dial 2

LIBERTY LUMBER YARD

339 S. Leonard
Liberty, MO 64068
(816) 767-1500 Dial 3

BONNER SPRINGS LUMBER YARD

4120 Bonner Industrial Drive
Shawnee, KS 66226
(816) 767-1500 Dial 4



**MEAD
LUMBER**

meadlumber.com